

## Product datasheet for **TA342066**

### PIK3IP1 Rabbit Polyclonal Antibody

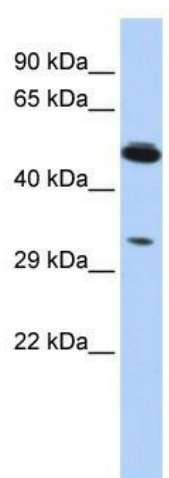
#### Product data:

Product Type:	Primary Antibodies
Applications:	WB
Recommended Dilution:	WB
Reactivity:	Human
Host:	Rabbit
Isotype:	IgG
Clonality:	Polyclonal
Immunogen:	The immunogen for anti-PIK3IP1 antibody: synthetic peptide directed towards the middle region of human PIK3IP1. Synthetic peptide located within the following region: QALPAFTTEIQEASEGPGADEVQVFAPANALPARSEAAAQPVIGISQRV
Formulation:	Liquid. Purified antibody supplied in 1x PBS buffer with 0.09% (w/v) sodium azide and 2% sucrose. <i>Note that this product is shipped as lyophilized powder to China customers.</i>
Concentration:	lot specific
Storage:	Store at -20°C as received.
Stability:	Stable for 12 months from date of receipt.
Predicted Protein Size:	28 kDa
Gene Name:	phosphoinositide-3-kinase interacting protein 1
Database Link:	<a href="#">NP_443112</a> <a href="#">Entrez Gene 113791</a> Human
Background:	The exact function of PIK3IP1 remains unknown.
Synonyms:	HGFL; hHGFL(S)
Note:	Immunogen Sequence Homology: Human: 100%
Protein Families:	Transmembrane



[View online »](#)

## Product images:



WB Suggested Anti-PIK3IP1 Antibody Titration:  
0.2-1 ug/ml; ELISA Titer: 1: 312500; Positive  
Control: HCT15 cell lysate