

Product datasheet for **TA342063**

CNTNAP3 Rabbit Polyclonal Antibody

Product data:

Product Type:	Primary Antibodies
Applications:	WB
Recommended Dilution:	WB
Reactivity:	Human
Host:	Rabbit
Isotype:	IgG
Clonality:	Polyclonal
Immunogen:	The immunogen for anti-CNTNAP3 antibody: synthetic peptide directed towards the middle region of human CNTNAP3. Synthetic peptide located within the following region: GSGPLGPFLVYCNMTADAAWTVVQHGGPDAVTLRGAPSGHPRSAVSFAYA
Formulation:	Liquid. Purified antibody supplied in 1x PBS buffer with 0.09% (w/v) sodium azide and 2% sucrose. <i>Note that this product is shipped as lyophilized powder to China customers.</i>
Concentration:	lot specific
Conjugation:	Unconjugated
Storage:	Store at -20°C as received.
Stability:	Stable for 12 months from date of receipt.
Predicted Protein Size:	141 kDa
Gene Name:	contactin associated protein-like 3
Database Link:	NP_387504 Entrez Gene 79937 Human Q9BZ76
Background:	The specific function of this protein remains unknown. The protein encoded by this gene belongs to the NCP family of cell-recognition molecules. This family represents a distinct subgroup of the neurexins. NCP proteins mediate neuron-glia interactions in vertebrates and glial-glia contact in invertebrates. The protein encoded by this gene may play a role in cell recognition within the nervous system. Alternatively spliced transcript variants encoding different isoforms have been described but their biological nature has not been determined.



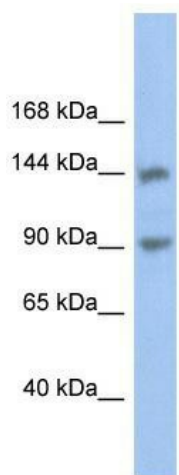
[View online »](#)

Synonyms: CASPR3; CNTNAP3A

Note: Immunogen Sequence Homology: Human: 100%

Protein Families: Secreted Protein, Transmembrane

Product images:



WB Suggested Anti-CNTNAP3 Antibody Titration:
0.2-1 ug/ml; ELISA Titer: 1: 312500; Positive
Control: DU145 cell lysate