

## Product datasheet for **TA342062**

### HLA DP (HLA-DPA1) Rabbit Polyclonal Antibody

#### Product data:

Product Type:	Primary Antibodies
Applications:	WB
Recommended Dilution:	WB
Reactivity:	Human
Host:	Rabbit
Isotype:	IgG
Clonality:	Polyclonal
Immunogen:	The immunogen for anti-HLA-DPA1 antibody: synthetic peptide directed towards the middle region of human HLA-DPA1. Synthetic peptide located within the following region: EAQEPIQMPETTETVLCALGLVLGLVGIIVGTVLIIKSLRSGHDPRAQGT
Formulation:	Liquid. Purified antibody supplied in 1x PBS buffer with 0.09% (w/v) sodium azide and 2% sucrose. <i>Note that this product is shipped as lyophilized powder to China customers.</i>
Concentration:	lot specific
Conjugation:	Unconjugated
Storage:	Store at -20°C as received.
Stability:	Stable for 12 months from date of receipt.
Predicted Protein Size:	26 kDa
Gene Name:	major histocompatibility complex, class II, DP alpha 1
Database Link:	<a href="#">NP_291032</a> <a href="#">Entrez Gene 3113 Human</a> <a href="#">P20036</a>



[View online »](#)

**Background:**

The specific function of this protein remains unknown. HLA-DPA1 belongs to the HLA class II alpha chain paralogues. This class II molecule is a heterodimer consisting of an alpha (DPA) and a beta (DPB) chain, both anchored in the membrane. It plays a central role in the immune system by presenting peptides derived from extracellular proteins. Class II molecules are expressed in antigen presenting cells (APC: B lymphocytes, dendritic cells, macrophages). The alpha chain is approximately 33-35 kDa and its gene contains 5 exons. Exon one encodes the leader peptide, exons 2 and 3 encode the two extracellular domains, exon 4 encodes the transmembrane domain and the cytoplasmic tail. Within the DP molecule both the alpha chain and the beta chain contain the polymorphisms specifying the peptide binding specificities, resulting in up to 4 different molecules. Publication Note: This RefSeq record includes a subset of the publications that are available for this gene. Please see the Entrez Gene record to access additional publications.

**Synonyms:**

DP(W3); DP(W4); HLA-DP1A; HLADP; HLASB; PLT1

**Note:**

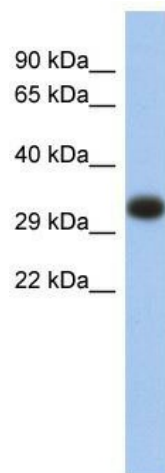
Immunogen Sequence Homology: Human: 100%; Pig: 86%

**Protein Families:**

Transmembrane

**Protein Pathways:**

Allograft rejection, Antigen processing and presentation, Asthma, Autoimmune thyroid disease, Cell adhesion molecules (CAMs), Graft-versus-host disease, Systemic lupus erythematosus, Type I diabetes mellitus, Viral myocarditis

**Product images:**

WB Suggested Anti-HLA-DPA1 Antibody Titration:  
0.2-1 ug/ml; ELISA Titer: 1: 1562500; Positive  
Control: Human Thymus