

Product datasheet for TA342061

Selenoi Rabbit Polyclonal Antibody

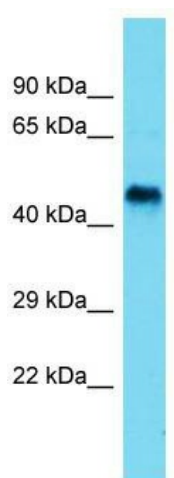
Product data:

Product Type:	Primary Antibodies
Applications:	WB
Recommended Dilution:	WB
Reactivity:	Rat
Host:	Rabbit
Isotype:	IgG
Clonality:	Polyclonal
Immunogen:	The immunogen for Anti-Seli antibody is: synthetic peptide directed towards the N-terminal region of Rat Seli. Synthetic peptide located within the following region: FMLLVFNLLLLTYFDPDFYASAPGHKHVPDWWVIVGILNFVAYTLDGVD
Formulation:	Liquid. Purified antibody supplied in 1x PBS buffer with 0.09% (w/v) sodium azide and 2% sucrose.
Concentration:	lot specific
Conjugation:	Unconjugated
Storage:	Store at -20°C as received.
Stability:	Stable for 12 months from date of receipt.
Predicted Protein Size:	43 kDa
Gene Name:	selenoprotein I
Database Link:	NP_001128226 Entrez Gene 362713 Rat
Background:	This gene encodes a selenoprotein, which contains a selenocysteine (Sec) residue at its active site. The selenocysteine is encoded by the UGA codon that normally signals translation termination. The 3' UTR of selenoprotein genes have a common stem-loop structure, The sec insertion sequence (SECIS), that is necessary for the recognition of UGA as a Sec codon rather than as a stop signal.
Synonyms:	EPT1; hEPT1; KIAA1724; OTTHUMP00000200812
Note:	Immunogen Sequence Homology: Pig: 100%; Rat: 100%; Horse: 100%; Human: 100%; Mouse: 100%; Bovine: 100%; Rabbit: 100%; Dog: 93%



[View online »](#)

Product images:



Host: Rabbit; Target Name: Seli; Sample Tissue: Rat Small Intestine lysates; Antibody Dilution: 1.0 ug/ml