

Product datasheet for **TA342060**

MMEL1 Rabbit Polyclonal Antibody

Product data:

Product Type:	Primary Antibodies
Applications:	WB
Recommended Dilution:	WB
Reactivity:	Human
Host:	Rabbit
Isotype:	IgG
Clonality:	Polyclonal
Immunogen:	The immunogen for anti-MMEL1 antibody: synthetic peptide directed towards the middle region of human MMEL1. Synthetic peptide located within the following region: EVVYGIPLYLQNLENIIDTYSARTIQNYLVWRLVLDRIGSLSQRFKDTRV
Formulation:	Liquid. Purified antibody supplied in 1x PBS buffer with 0.09% (w/v) sodium azide and 2% sucrose. <i>Note that this product is shipped as lyophilized powder to China customers.</i>
Concentration:	lot specific
Conjugation:	Unconjugated
Storage:	Store at -20°C as received.
Stability:	Stable for 12 months from date of receipt.
Predicted Protein Size:	88 kDa
Gene Name:	membrane metallo-endopeptidase-like 1
Database Link:	NP_258428 Entrez Gene 79258 Human Q495T6



[View online »](#)

Background:

MMEL1 is a member ofThe neutral endopeptidase (NEP) or membrane metallo-endopeptidase (MME) family. Family members play important roles in pain perception, arterial pressure regulation, phosphate metabolism and homeostasis. MMEL1 is a type II transmembrane protein and is thought to be expressed as a secreted protein.The protein encoded byThis gene is a member ofThe neutral endopeptidase (NEP) or membrane metallo-endopeptidase (MME) family. Family members play important roles in pain perception, arterial pressure regulation, phosphate metabolism and homeostasis.This protein is a type II transmembrane protein and is thought to be expressed as a secreted protein.This gene is expressed mainly in testis with weak expression inThe brain, kidney, and heart.

Synonyms:

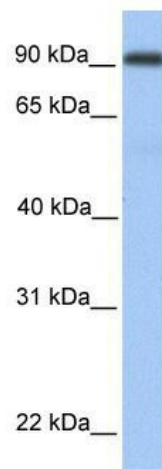
MMEL2; NEP2; NEPII; NL1; NL2; SEP

Note:

Immunogen Sequence Homology: Pig: 100%; Rat: 100%; Human: 100%; Mouse: 100%; Guinea pig: 100%; Dog: 93%; Horse: 93%; Bovine: 93%

Protein Families:

Druggable Genome, Protease, Secreted Protein, Transmembrane

Product images:

WB Suggested Anti-MMEL1 Antibody Titration:
0.2-1 ug/ml; Positive Control: Human Liver