

Product datasheet for **TA342059**

PGAP3 Rabbit Polyclonal Antibody

Product data:

Product Type:	Primary Antibodies
Applications:	WB
Recommended Dilution:	WB
Reactivity:	Human
Host:	Rabbit
Isotype:	IgG
Clonality:	Polyclonal
Immunogen:	The immunogen for anti-PGAP3 antibody: synthetic peptide directed towards the N terminal of human PGAP3. Synthetic peptide located within the following region: ECMWVTVGLYLQEGHKVPQFHGKWPF SRFLFFQEPASAVASFLNGLASLV
Formulation:	Liquid. Purified antibody supplied in 1x PBS buffer with 0.09% (w/v) sodium azide and 2% sucrose. <i>Note that this product is shipped as lyophilized powder to China customers.</i>
Concentration:	lot specific
Conjugation:	Unconjugated
Storage:	Store at -20°C as received.
Stability:	Stable for 12 months from date of receipt.
Predicted Protein Size:	36 kDa
Gene Name:	post-GPI attachment to proteins 3
Database Link:	NP_219487 Entrez Gene 93210 Human Q96FM1
Background:	PGAP3 is involved inThe lipid remodeling steps of GPI-anchor maturation. Lipid remodeling steps consist inThe generation of 2 saturated fatty chains atThe sn-2 position of GPI-anchors proteins. It is required for phospholipase A2 activity that removes an acyl-chain atThe sn-2 position of GPI-anchors duringThe remodeling of GPI.
Synonyms:	AGLA546; CAB2; hCOS16; PERLD1; PP1498

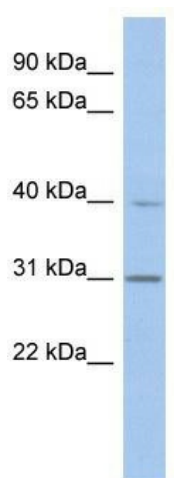


[View online »](#)

Note: Immunogen Sequence Homology: Pig: 100%; Horse: 100%; Human: 100%; Dog: 93%; Rat: 93%; Mouse: 93%; Bovine: 93%; Rabbit: 93%; Guinea pig: 93%

Protein Families: Transmembrane

Product images:



WB Suggested Anti-PGAP3 Antibody Titration: 0.2-1 ug/ml; ELISA Titer: 1: 1562500; Positive Control: THP-1 cell lysate