

Product datasheet for **TA342053**

Pigs Rabbit Polyclonal Antibody

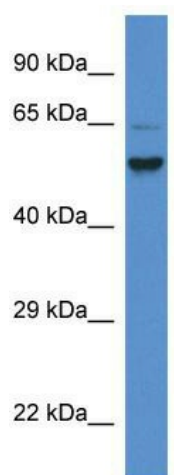
Product data:

Product Type:	Primary Antibodies
Applications:	WB
Recommended Dilution:	WB
Reactivity:	Mouse
Host:	Rabbit
Isotype:	IgG
Clonality:	Polyclonal
Immunogen:	The immunogen for anti-Pigs antibody: synthetic peptide corresponding to a region of Mouse. Synthetic peptide located within the following region: AVAAVQKAAKALALGHLSSAFAASQEAVTSSERAFFDPSLLHLLYFPDDQ
Formulation:	Liquid. Purified antibody supplied in 1x PBS buffer with 0.09% (w/v) sodium azide and 2% sucrose. <i>Note that this product is shipped as lyophilized powder to China customers.</i>
Concentration:	lot specific
Conjugation:	Unconjugated
Storage:	Store at -20°C as received.
Stability:	Stable for 12 months from date of receipt.
Predicted Protein Size:	62 kDa
Gene Name:	phosphatidylinositol glycan anchor biosynthesis, class S
Database Link:	NP_958808 Entrez Gene 276846 Mouse Q6PD26
Background:	Pigs is a component of the GPI transamidase complex. It is essential for transfer of GPI to proteins, particularly for formation of carbonyl intermediates.
Synonyms:	DKFZp686K20216; FLJ45226
Note:	Immunogen Sequence Homology: Dog: 100%; Pig: 100%; Rat: 100%; Horse: 100%; Human: 100%; Mouse: 100%; Bovine: 100%; Rabbit: 100%; Zebrafish: 100%; Guinea pig: 100%



[View online »](#)

Product images:



WB Suggested Anti-Pigs Antibody; Titration: 1.0 ug/ml; Positive Control: Mouse Small Intestine