

Product datasheet for **TA342052**

SURF4 Rabbit Polyclonal Antibody

Product data:

| | |
|-------------------------|-----------------------------------------------------------------------------------------------------------------------------------------------------------------------------------------------------------------------|
| Product Type: | Primary Antibodies |
| Applications: | WB |
| Recommended Dilution: | WB |
| Reactivity: | Human |
| Host: | Rabbit |
| Isotype: | IgG |
| Clonality: | Polyclonal |
| Immunogen: | The immunogen for anti-SURF4 antibody: synthetic peptide directed towards the N terminal of human SURF4. Synthetic peptide located within the following region: GQNDLMGTAEDFADQFLRVTKQYLPHVARLCLISTFLEDGIRMWFQWSEQ |
| Formulation: | Liquid. Purified antibody supplied in 1x PBS buffer with 0.09% (w/v) sodium azide and 2% sucrose. <i>Note that this product is shipped as lyophilized powder to China customers.</i> |
| Concentration: | lot specific |
| Conjugation: | Unconjugated |
| Storage: | Store at -20°C as received. |
| Stability: | Stable for 12 months from date of receipt. |
| Predicted Protein Size: | 30 kDa |
| Gene Name: | surfeit 4 |
| Database Link: | NP_149351 Entrez Gene 6836 Human O15260 |



[View online »](#)

Background:

SURF4 is a conserved integral membrane protein containing multiple putative transmembrane regions. In eukaryotic cells, protein transport betweenThe endoplasmic reticulum and Golgi compartments is mediated in part by non-clathrin-coated vesicular coat proteins (COPs).The specific function ofThis protein has not been determined but its yeast homolog is directly required for packaging glycosylated pro-alpha-factor into COPII vesicles.This gene is located inThe surfeit gene cluster, which is comprised of very tightly linked housekeeping genes that do not share sequence similarity.The encoded protein is a conserved integral membrane protein containing multiple putative transmembrane regions. In eukaryotic cells, protein transport betweenThe endoplasmic reticulum and Golgi compartments is mediated in part by non-clathrin-coated vesicular coat proteins (COPs).The specific function ofThis protein has not been determined but its yeast homolog is directly required for packaging glycosylated pro-alpha-factor into COPII vesicles.This gene uses multiple polyadenylation sites, resulting in transcript length variation.The existence of alternatively spliced transcript variants has been suggested, butTheir validity has not been determined.

Synonyms:

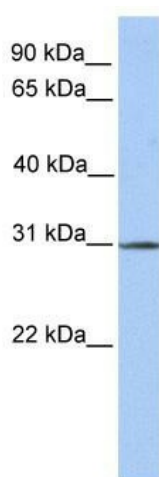
ERV29

Note:

Immunogen Sequence Homology: Dog: 100%; Pig: 100%; Rat: 100%; Human: 100%; Mouse: 100%; Bovine: 100%; Zebrafish: 93%; Guinea pig: 93%

Protein Families:

Transmembrane

Product images:

WB Suggested Anti-SURF4 Antibody Titration: 0.2-1 ug/ml; Positive Control: Human Lung