

Product datasheet for **TA342051**

SIGLEC10 Rabbit Polyclonal Antibody

Product data:

Product Type:	Primary Antibodies
Applications:	WB
Recommended Dilution:	WB
Reactivity:	Human
Host:	Rabbit
Isotype:	IgG
Clonality:	Polyclonal
Immunogen:	The immunogen for anti-SIGLEC10 antibody: synthetic peptide directed towards the middle region of human SIGLEC10. Synthetic peptide located within the following region: CHVDFSRKGVSAQRTVRLRVAYAPRDLVISISRDNTPALEPQPQGNVPYL
Formulation:	Liquid. Purified antibody supplied in 1x PBS buffer with 0.09% (w/v) sodium azide and 2% sucrose. <i>Note that this product is shipped as lyophilized powder to China customers.</i>
Concentration:	lot specific
Conjugation:	Unconjugated
Storage:	Store at -20°C as received.
Stability:	Stable for 12 months from date of receipt.
Predicted Protein Size:	76 kDa
Gene Name:	sialic acid binding Ig like lectin 10
Database Link:	NP_149121 Entrez Gene 89790 Human Q96LC7



[View online »](#)

Background:

SIGLEC10 is a putative adhesion molecule that mediates sialic-acid dependent binding to cells. SIGLEC10 preferentially binds to alpha-2,3- or alpha-2,6-linked sialic acid. The sialic acid recognition site may be masked by cis interactions with sialic acids on the same cell surface. In the immune response, SIGLEC10 may act as an inhibitory receptor upon ligand induced tyrosine phosphorylation by recruiting cytoplasmic phosphatase(s) via their SH2 domain(s) that block signal transduction through dephosphorylation of signaling molecules. SIGLECs are members of the immunoglobulin superfamily that are expressed on the cell surface. Most SIGLECs have 1 or more cytoplasmic immune receptor tyrosine-based inhibitory motifs, or ITIMs. SIGLECs are typically expressed on cells of the innate immune system, with the exception of the B-cell expressed SIGLEC6 (MIM 604405). [supplied by OMIM].
PRIMARYREFSEQ_SPAN PRIMARY_IDENTIFIER PRIMARY_SPAN COMP 1-653 AC008750.9 90495-91147 c 654-760 DA387605.1 391-497 761-2959 AF301007.1 262-2460 2960-3794 AY358337.1 1930-2764

Synonyms:

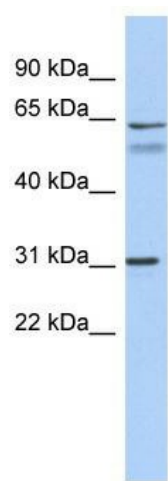
PRO940; SIGLEC-10; SLG2

Note:

Immunogen Sequence Homology: Human: 100%; Dog: 79%

Protein Families:

Druggable Genome, Transmembrane

Product images:

WB Suggested Anti-SIGLEC10 Antibody Titration:
0.2-1 ug/ml; ELISA Titer: 1: 1562500; Positive
Control: OVCAR-3 cell lysate