

Product datasheet for **TA342049**

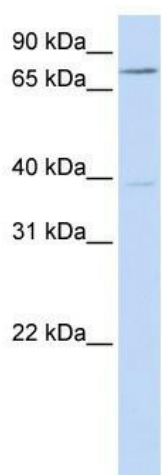
C17orf80 Rabbit Polyclonal Antibody

Product data:

Product Type:	Primary Antibodies
Applications:	WB
Recommended Dilution:	WB
Reactivity:	Human
Host:	Rabbit
Isotype:	IgG
Clonality:	Polyclonal
Immunogen:	The immunogen for anti-C17orf80 antibody: synthetic peptide directed towards the N terminal of human C17orf80. Synthetic peptide located within the following region: MSDNPPRMEVCPYCKKPKRLKSHLPYCKMIGPTIPTDQKVYQSKPATLP
Formulation:	Liquid. Purified antibody supplied in 1x PBS buffer with 0.09% (w/v) sodium azide and 2% sucrose. <i>Note that this product is shipped as lyophilized powder to China customers.</i>
Concentration:	lot specific
Conjugation:	Unconjugated
Storage:	Store at -20°C as received.
Stability:	Stable for 12 months from date of receipt.
Predicted Protein Size:	67 kDa
Gene Name:	chromosome 17 open reading frame 80
Database Link:	NP_060411 Entrez Gene 55028 Human Q9BSJ5
Background:	The exact function of C17orf80 remains unknown.
Synonyms:	HLC-8; MIG3; SPEP1
Note:	Immunogen Sequence Homology: Dog: 100%; Pig: 100%; Rat: 100%; Human: 100%; Mouse: 100%; Bovine: 100%; Rabbit: 100%; Guinea pig: 100%; Horse: 92%; Zebrafish: 77%
Protein Families:	Transmembrane



[View online »](#)

Product images:

WB Suggested Anti-C17orf80 Antibody Titration:
0.2-1 ug/ml; ELISA Titer: 1: 1562500; Positive
Control: Hela cell lysate