

Product datasheet for **TA342048**

FAM70A (TMEM255A) Rabbit Polyclonal Antibody

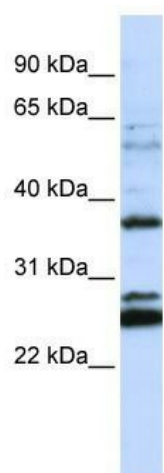
Product data:

Product Type:	Primary Antibodies
Applications:	WB
Recommended Dilution:	WB
Reactivity:	Human
Host:	Rabbit
Isotype:	IgG
Clonality:	Polyclonal
Immunogen:	The immunogen for anti-FAM70A antibody: synthetic peptide directed towards the N terminal of human FAM70A. Synthetic peptide located within the following region: IVDGVFAARHIDLKPLYANRCHYVPKTSQKEAEEVISSTKNPSTRVMR
Formulation:	Liquid. Purified antibody supplied in 1x PBS buffer with 0.09% (w/v) sodium azide and 2% sucrose. <i>Note that this product is shipped as lyophilized powder to China customers.</i>
Concentration:	lot specific
Conjugation:	Unconjugated
Storage:	Store at -20°C as received.
Stability:	Stable for 12 months from date of receipt.
Predicted Protein Size:	38 kDa
Gene Name:	transmembrane protein 255A
Database Link:	NP_060408 Entrez Gene 55026 Human Q5JRV8
Background:	The exact function of FAM70A remains unknown.
Synonyms:	FAM70A
Note:	Immunogen Sequence Homology: Dog: 100%; Pig: 100%; Rat: 100%; Horse: 100%; Human: 100%; Mouse: 100%; Bovine: 100%; Rabbit: 100%; Guinea pig: 100%; Zebrafish: 79%
Protein Families:	Transmembrane



[View online »](#)

Product images:



WB Suggested Anti-FAM70A Antibody Titration:
0.2-1 ug/ml; ELISA Titer: 1: 1562500; Positive
Control: Jurkat cell lysate