

Product datasheet for TA342046

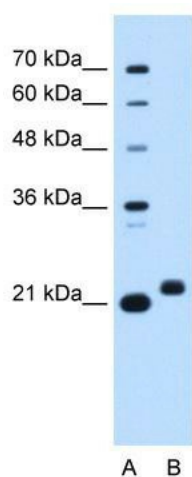
C1orf159 Rabbit Polyclonal Antibody

Product data:

Product Type:	Primary Antibodies
Applications:	WB
Recommended Dilution:	WB
Reactivity:	Human
Host:	Rabbit
Isotype:	IgG
Clonality:	Polyclonal
Immunogen:	The immunogen for anti-C1orf159 antibody: synthetic peptide directed towards the middle region of human C1orf159. Synthetic peptide located within the following region: GQSQGALWVCPQTGLPGSGSRPPLPGSPGDPPTTRQGQGRIWLVPALDLS
Formulation:	Liquid. Purified antibody supplied in 1x PBS buffer with 0.09% (w/v) sodium azide and 2% sucrose.
Concentration:	lot specific
Conjugation:	Unconjugated
Storage:	Store at -20°C as received.
Stability:	Stable for 12 months from date of receipt.
Predicted Protein Size:	27 kDa
Gene Name:	chromosome 1 open reading frame 159
Database Link:	NP_060361 Entrez Gene 54991 Human Q96HA4
Background:	The function remains unknown.
Synonyms:	RP11-465B22.4
Note:	Immunogen Sequence Homology: Human: 100%
Protein Families:	Transmembrane


[View online »](#)

Product images:



WB Suggested Anti-C1orf159 Antibody Titration:
0.2-1 ug/ml; Positive Control: HepG2 cell lysate