

## Product datasheet for **TA342045**

### CLN6 Rabbit Polyclonal Antibody

#### Product data:

Product Type:	Primary Antibodies
Applications:	IHC, WB
Recommended Dilution:	WB, IHC
Reactivity:	Human
Host:	Rabbit
Isotype:	IgG
Clonality:	Polyclonal
Immunogen:	The immunogen for anti-CLN6 antibody: synthetic peptide directed towards the C terminal of human CLN6. Synthetic peptide located within the following region: RLFLDSNGLFLFSSFALTLVLLVALVWAWLWNDPVLRRKKYPGVIYVPEPWA
Formulation:	Liquid. Purified antibody supplied in 1x PBS buffer with 0.09% (w/v) sodium azide and 2% sucrose. <i>Note that this product is shipped as lyophilized powder to China customers.</i>
Concentration:	lot specific
Conjugation:	Unconjugated
Storage:	Store at -20°C as received.
Stability:	Stable for 12 months from date of receipt.
Predicted Protein Size:	36 kDa
Gene Name:	ceroid-lipofuscinosis, neuronal 6, late infantile, variant
Database Link:	<a href="#">NP_060352</a> <a href="#">Entrez Gene 54982 Human</a> <a href="#">Q9NWW5</a>
Background:	This gene is one of eight which have been associated with neuronal ceroid lipofuscinoses (NCL). Also referred to as Batten disease, NCL comprises a class of autosomal recessive, neurodegenerative disorders affecting children. The genes responsible likely encode proteins involved in the degradation of post-translationally modified proteins in lysosomes. The primary defect in NCL disorders is thought to be associated with lysosomal storage function. [provided by RefSeq, Oct 2008]



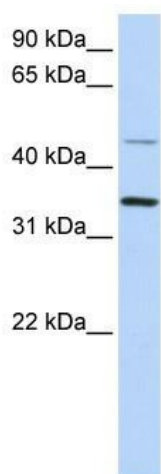
[View online »](#)

**Synonyms:** CLN4A; HsT18960; nclf

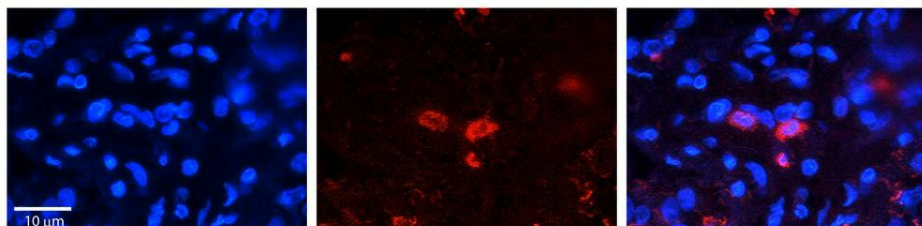
**Note:** Immunogen Sequence Homology: Dog: 100%; Pig: 100%; Rat: 100%; Horse: 100%; Human: 100%; Mouse: 100%; Sheep: 100%; Bovine: 100%; Rabbit: 100%; Guinea pig: 93%; Zebrafish: 86%

**Protein Families:** Transmembrane

### Product images:



WB Suggested Anti-CLN6 Antibody Titration: 0.2-1 ug/ml; ELISA Titer: 1: 1562500; Positive Control: 293T cell lysate. CLN6 is supported by BioGPS gene expression data to be expressed in HEK293T



Rabbit Anti-CLN6 Antibody; Formalin Fixed Paraffin Embedded Tissue: Human Pineal Tissue; Observed Staining: Cytoplasmic in cell bodies of pinealocytes; Primary Antibody Concentration: 1: 100; Other Working Concentrations: 1/600; Secondary Antibody: Donkey