

Product datasheet for **TA342044**

CLN6 Rabbit Polyclonal Antibody

Product data:

Product Type:	Primary Antibodies
Applications:	WB
Recommended Dilution:	WB
Reactivity:	Human
Host:	Rabbit
Isotype:	IgG
Clonality:	Polyclonal
Immunogen:	The immunogen for anti-CLN6 antibody: synthetic peptide directed towards the middle region of human CLN6. Synthetic peptide located within the following region: LPRSITYVSIIFIMGASIHVLGDSVNHRLLFSGYQHHLVSVRENPIIKNL
Formulation:	Liquid. Purified antibody supplied in 1x PBS buffer with 0.09% (w/v) sodium azide and 2% sucrose. <i>Note that this product is shipped as lyophilized powder to China customers.</i>
Concentration:	lot specific
Conjugation:	Unconjugated
Storage:	Store at -20°C as received.
Stability:	Stable for 12 months from date of receipt.
Predicted Protein Size:	36 kDa
Gene Name:	ceroid-lipofuscinosis, neuronal 6, late infantile, variant
Database Link:	NP_060352 Entrez Gene 54982 Human Q9NWW5
Background:	This gene is one of eight which have been associated with neuronal ceroid lipofuscinoses (NCL). Also referred to as Batten disease, NCL comprises a class of autosomal recessive, neurodegenerative disorders affecting children. The genes responsible likely encode proteins involved in the degradation of post-translationally modified proteins in lysosomes. The primary defect in NCL disorders is thought to be associated with lysosomal storage function. [provided by RefSeq, Oct 2008]



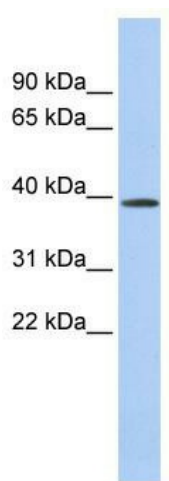
[View online »](#)

Synonyms: CLN4A; HsT18960; nclf

Note: Immunogen Sequence Homology: Dog: 100%; Pig: 100%; Rat: 100%; Horse: 100%; Human: 100%; Mouse: 100%; Guinea pig: 100%; Sheep: 93%; Bovine: 93%; Rabbit: 93%; Zebrafish: 93%

Protein Families: Transmembrane

Product images:



WB Suggested Anti-CLN6 Antibody Titration: 0.2-1 ug/ml; ELISA Titer: 1: 1562500; Positive Control: Human Lung