

Product datasheet for **TA342042**

TMEM127 Rabbit Polyclonal Antibody

Product data:

Product Type:	Primary Antibodies
Applications:	WB
Recommended Dilution:	WB
Reactivity:	Human
Host:	Rabbit
Isotype:	IgG
Clonality:	Polyclonal
Immunogen:	The immunogen for anti-TMEM127 antibody: synthetic peptide directed towards the middle region of human TMEM127. Synthetic peptide located within the following region: AFLLDVFGPKHPALKITRRYAFAHILTVLQCATVIGFSYWASELILAQQQ
Formulation:	Liquid. Purified antibody supplied in 1x PBS buffer with 0.09% (w/v) sodium azide and 2% sucrose. <i>Note that this product is shipped as lyophilized powder to China customers.</i>
Concentration:	lot specific
Conjugation:	Unconjugated
Storage:	Store at -20°C as received.
Stability:	Stable for 12 months from date of receipt.
Predicted Protein Size:	26 kDa
Gene Name:	transmembrane protein 127
Database Link:	NP_060319 Entrez Gene 55654 Human O75204
Background:	This gene encodes a transmembrane protein with 3 predicted transmembrane domains. The protein is associated with a subpopulation of vesicular organelles corresponding to early endosomal structures, with The Golgi, and with lysosomes, and may participate in protein trafficking between These structures. Mutations in This gene and several other genes cause pheochromocytomas. Alternatively spliced transcript variants encoding The same protein have been identified. [provided by RefSeq, Aug 2010]



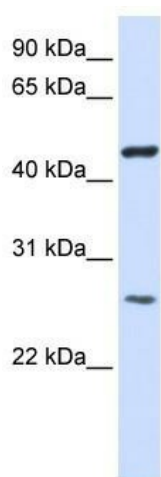
[View online »](#)

Synonyms: FLJ20507; FLJ22257

Note: Immunogen Sequence Homology: Dog: 100%; Pig: 100%; Rat: 100%; Horse: 100%; Human: 100%; Mouse: 100%; Bovine: 100%; Rabbit: 100%; Zebrafish: 100%; Guinea pig: 100%

Protein Families: Transmembrane

Product images:



WB Suggested Anti-TMEM127 Antibody Titration:
0.2-1 ug/ml; ELISA Titer: 1: 312500; Positive
Control: Transfected 293T