

## Product datasheet for TA342040

### RHBDL2 Rabbit Polyclonal Antibody

#### Product data:

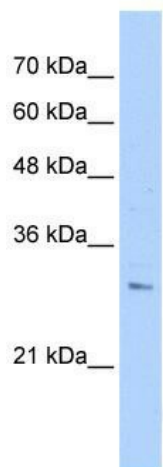
Product Type:	Primary Antibodies
Applications:	WB
Recommended Dilution:	WB
Reactivity:	Human
Host:	Rabbit
Isotype:	IgG
Clonality:	Polyclonal
Immunogen:	The immunogen for anti-RHBDL2 antibody: synthetic peptide directed towards the N terminal of human RHBDL2. Synthetic peptide located within the following region: KWMLPEKSRGTYLERANCFPPPVFIISLAELAVFIYYAVWKPQKQWIT
Formulation:	Liquid. Purified antibody supplied in 1x PBS buffer with 0.09% (w/v) sodium azide and 2% sucrose.
Concentration:	lot specific
Conjugation:	Unconjugated
Storage:	Store at -20°C as received.
Stability:	Stable for 12 months from date of receipt.
Predicted Protein Size:	34 kDa
Gene Name:	rhomboid like 2
Database Link:	<a href="#">NP_060291</a> <a href="#">Entrez Gene 54933 Human</a> <a href="#">Q9NX52</a>
Background:	The protein encoded byThis gene is a member ofThe rhomboid family of integral membrane proteins.This family contains proteins that are related to Drosophila rhomboid protein. Members ofThis family are found in both prokaryotes and eukaryotes and are thought to function as intramembrane serine proteases.The encoded protein is thought to release soluble growth factors by proteolytic cleavage of certain membrane-bound substrates, including ephrin B2 and ephrin B3. [provided by RefSeq, Jul 2008]
Synonyms:	RRP2


[View online »](#)

**Note:** Immunogen Sequence Homology: Human: 100%; Dog: 86%; Pig: 86%; Horse: 86%; Rabbit: 86%; Rat: 85%; Bovine: 79%

**Protein Families:** Protease, Transmembrane

### Product images:



WB Suggested Anti-RHBDL2 Antibody Titration:  
0.2-1 ug/ml; Positive Control: PANC1 cell lysate