

Product datasheet for **TA342039**

RHBDL2 Rabbit Polyclonal Antibody

Product data:

Product Type:	Primary Antibodies
Applications:	WB
Recommended Dilution:	WB
Reactivity:	Human
Host:	Rabbit
Isotype:	IgG
Clonality:	Polyclonal
Immunogen:	The immunogen for Anti-RHBDL2 antibody is: synthetic peptide directed towards the N-terminal region of Human RHBDL2. Synthetic peptide located within the following region: EEEEEKMREDGGGKDRAKSKKVHRIVSKWMLPEKSRGTYLERANCFPPP
Formulation:	Liquid. Purified antibody supplied in 1x PBS buffer with 0.09% (w/v) sodium azide and 2% sucrose. <i>Note that this product is shipped as lyophilized powder to China customers.</i>
Concentration:	lot specific
Purification:	Affinity Purified
Conjugation:	Unconjugated
Storage:	Store at -20°C as received.
Stability:	Stable for 12 months from date of receipt.
Predicted Protein Size:	40 kDa
Gene Name:	rhomboid like 2
Database Link:	NP_060291 Entrez Gene 54933 Human Q9NX52



[View online »](#)

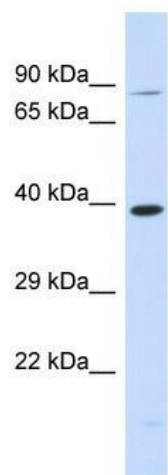
Background: The protein encoded by this gene is a member of the rhomboid family of integral membrane proteins. This family contains proteins that are related to Drosophila rhomboid protein. Members of this family are found in both prokaryotes and eukaryotes and are thought to function as intramembrane serine proteases. The encoded protein is thought to release soluble growth factors by proteolytic cleavage of certain membrane-bound substrates, including ephrin B2 and ephrin B3. [provided by RefSeq, Jul 2008]

Synonyms: RRP2

Note: Immunogen Sequence Homology: Human: 100%

Protein Families: Protease, Transmembrane

Product images:



Host: Rabbit; Target Name: RHBDL2; Sample Tissue: 293T Whole Cell lysates; Antibody Dilution: 1.0 ug/ml