

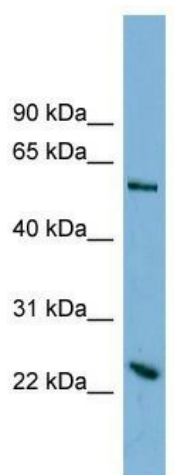
## Product datasheet for **TA342038**

### TMEM161A Rabbit Polyclonal Antibody

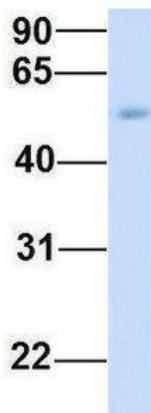
#### Product data:

|                         |  |
|-------------------------|--|
| Product Type:           | Primary Antibodies   |
| Applications:           | WB   |
| Recommended Dilution:   | WB   |
| Reactivity:             | Human  |
| Host:                   | Rabbit   |
| Isotype:                | IgG  |
| Clonality:              | Polyclonal   |
| Immunogen:              | The immunogen for anti-TMEM161A antibody: synthetic peptide directed towards the middle region of human TMEM161A. Synthetic peptide located within the following region:<br>LLAMLVQVREETLELGLPGLASMTQNLEPLLKKQGWDWALPVAKLAIR |
| Formulation:            | Liquid. Purified antibody supplied in 1x PBS buffer with 0.09% (w/v) sodium azide and 2% sucrose.  |
| Concentration:          | lot specific   |
| Conjugation:            | Unconjugated   |
| Storage:                | Store at -20°C as received.  |
| Stability:              | Stable for 12 months from date of receipt.   |
| Predicted Protein Size: | 53 kDa   |
| Gene Name:              | transmembrane protein 161A   |
| Database Link:          | <a href="#">NP_060284</a><br><a href="#">Entrez Gene 54929 Human</a><br><a href="#">Q9NX61</a>   |
| Background:             | The function of This protein remains unknown.  |
| Synonyms:               | AROS-29  |
| Note:                   | Immunogen Sequence Homology: Rat: 100%; Horse: 100%; Human: 100%; Mouse: 100%; Bovine: 100%; Dog: 93%; Pig: 86%; Guinea pig: 86%   |
| Protein Families:       | Transmembrane  |


[View online »](#)

**Product images:**


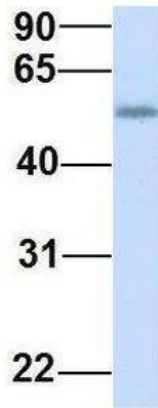
WB Suggested Anti-TMEM161A Antibody  
Titration: 0.2-1 ug/ml; ELISA Titer: 1: 62500;  
Positive Control: HT1080 cell lysate

**TMEM161A**


Rabbit Anti-TMEM161A  
Sample Type: Human Fetal  
Muscle  
Antibody Concentration: 1ug/mL

Host: Rabbit; Target Name: TMEM161A; Sample  
Tissue: Human Fetal Muscle; Antibody Dilution:  
1.0 ug/ml

## TMEM161A



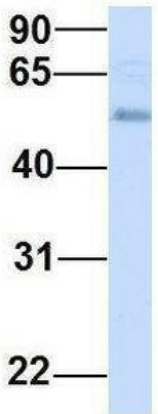
Rabbit Anti-TMEM161A

Sample Type: Human Fetal Heart

Antibody Concentration: 1ug/mL

Host: Rabbit; Target Name: TMEM161A; Sample Tissue: Human Fetal Heart; Antibody Dilution: 1.0 ug/ml

## TMEM161A



Rabbit Anti-TMEM161A

Sample Type: Human Fetal Lung

Antibody Concentration: 1ug/mL

Host: Rabbit; Target Name: TMEM161A; Sample Tissue: Human Fetal Lung; Antibody Dilution: 1.0 ug/ml