

Product datasheet for **TA342037**

BPNT2 Rabbit Polyclonal Antibody

Product data:

Product Type:	Primary Antibodies
Applications:	WB
Recommended Dilution:	WB
Reactivity:	Human
Host:	Rabbit
Isotype:	IgG
Clonality:	Polyclonal
Immunogen:	The immunogen for anti-IMPAD1 antibody: synthetic peptide directed towards the N terminal of human IMPAD1. Synthetic peptide located within the following region: VLAAVRGGDEVRRVRESNVLHEKSKGKTREGAEDKMTSGDVLSNRKMFYL
Formulation:	Liquid. Purified antibody supplied in 1x PBS buffer with 0.09% (w/v) sodium azide and 2% sucrose. <i>Note that this product is shipped as lyophilized powder to China customers.</i>
Concentration:	lot specific
Conjugation:	Unconjugated
Storage:	Store at -20°C as received.
Stability:	Stable for 12 months from date of receipt.
Predicted Protein Size:	39 kDa
Gene Name:	inositol monophosphatase domain containing 1
Database Link:	NP_060283 Entrez Gene 54928 Human Q9NX62
Background:	This gene encodes a member of the inositol monophosphatase family. The encoded protein is localized to the Golgi apparatus and catalyzes the hydrolysis of phosphoadenosine phosphate (PAP) to adenosine monophosphate (AMP). Mutations in this gene are a cause of GRAPP type chondrodysplasia with joint dislocations, and a pseudogene of this gene is located on the long arm of chromosome 1. [provided by RefSeq, Dec 2011]
Synonyms:	GPAPP; IMP-3; IMP 3; IMPA3

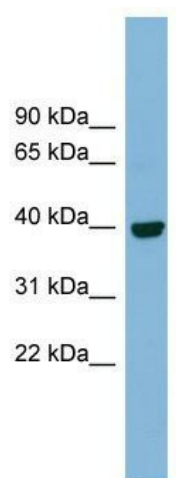


[View online »](#)

Note: Immunogen Sequence Homology: Dog: 100%; Rat: 100%; Human: 100%; Rabbit: 100%; Pig: 93%; Mouse: 93%; Bovine: 93%; Guinea pig: 93%; Zebrafish: 85%

Protein Families: Transmembrane

Product images:



WB Suggested Anti-IMPAD1 Antibody Titration:
0.2-1 ug/ml; ELISA Titer: 1: 1562500; Positive
Control: Human Spleen