

Product datasheet for **TA342036**

BPNT2 Rabbit Polyclonal Antibody

Product data:

Product Type:	Primary Antibodies
Applications:	WB
Recommended Dilution:	WB
Reactivity:	Human
Host:	Rabbit
Isotype:	IgG
Clonality:	Polyclonal
Immunogen:	The immunogen for anti-IMPAD1 antibody: synthetic peptide directed towards the middle region of human IMPAD1. Synthetic peptide located within the following region: TAWAMVDGGSNVKARSSYNEKTPRIVVSRSHSGMVKQVALQTFGNQTTII
Formulation:	Liquid. Purified antibody supplied in 1x PBS buffer with 0.09% (w/v) sodium azide and 2% sucrose.
Concentration:	lot specific
Conjugation:	Unconjugated
Storage:	Store at -20°C as received.
Stability:	Stable for 12 months from date of receipt.
Predicted Protein Size:	39 kDa
Gene Name:	inositol monophosphatase domain containing 1
Database Link:	NP_060283 Entrez Gene 54928 Human Q9NX62
Background:	This gene encodes a member ofThe inositol monophosphatase family.The encoded protein is localized toThe Golgi apparatus and catalyzesThe hydrolysis of phosphoadenosine phosphate (PAP) to adenosine monophosphate (AMP). Mutations inThis gene are a cause of GRAPP type chondrodysplasia with joint dislocations, and a pseudogene ofThis gene is located onThe long arm of chromosome 1. [provided by RefSeq, Dec 2011]
Synonyms:	GPAPP; IMP-3; IMP 3; IMPA3

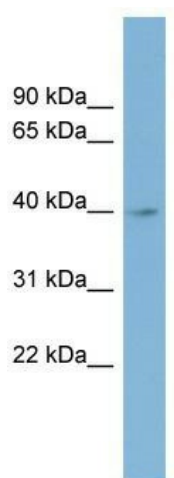


[View online »](#)

Note: Immunogen Sequence Homology: Rat: 100%; Human: 100%; Mouse: 100%; Rabbit: 100%; Dog: 93%; Pig: 93%; Horse: 93%; Bovine: 93%; Guinea pig: 93%

Protein Families: Transmembrane

Product images:



WB Suggested Anti-IMPAD1 Antibody Titration:
0.2-1 ug/ml; ELISA Titer: 1: 312500; Positive
Control: Human Spleen