

Product datasheet for **TA342035**

LAX1 Rabbit Polyclonal Antibody

Product data:

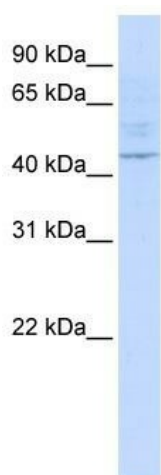
Product Type:	Primary Antibodies
Applications:	WB
Recommended Dilution:	WB
Reactivity:	Human
Host:	Rabbit
Isotype:	IgG
Clonality:	Polyclonal
Immunogen:	The immunogen for anti-LAX1 antibody: synthetic peptide directed towards the middle region of human LAX1. Synthetic peptide located within the following region: LFVLPSTQKLEFTERDEGCGDAGDCTSLYSPGAEDSDLSNNGEGSSQIS
Formulation:	Liquid. Purified antibody supplied in 1x PBS buffer with 0.09% (w/v) sodium azide and 2% sucrose. <i>Note that this product is shipped as lyophilized powder to China customers.</i>
Concentration:	lot specific
Conjugation:	Unconjugated
Storage:	Store at -20°C as received.
Stability:	Stable for 12 months from date of receipt.
Predicted Protein Size:	44 kDa
Gene Name:	lymphocyte transmembrane adaptor 1
Database Link:	NP_060243 Entrez Gene 54900 Human Q8I WV1
Background:	LAX1 is a single-pass type III membrane protein. It negatively regulates TCR (T-cell antigen receptor)-mediated signaling in T-cells and BCR (B-cell antigen receptor)-mediated signaling in B-cells.
Synonyms:	LAX
Note:	Immunogen Sequence Homology: Human: 100%; Rat: 79%; Bovine: 79%



[View online »](#)

Protein Families: Transmembrane

Product images:



WB Suggested Anti-LAX1 Antibody Titration: 0.2-1 ug/ml; ELISA Titer: 1: 12500; Positive Control: HeLa cell lysate