

Product datasheet for **TA342034**

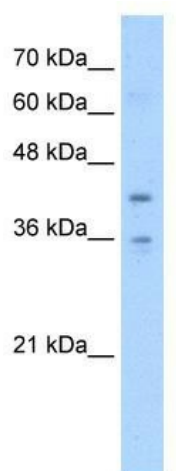
TMEM104 Rabbit Polyclonal Antibody

Product data:

Product Type:	Primary Antibodies
Applications:	WB
Recommended Dilution:	WB
Reactivity:	Human
Host:	Rabbit
Isotype:	IgG
Clonality:	Polyclonal
Immunogen:	The immunogen for anti-TMEM104 antibody: synthetic peptide directed towards the middle region of human TMEM104. Synthetic peptide located within the following region: GD LAIYAAA VPFSLMQVTCSATGNDSCGVEADTKYNDTDRCWGPLRRVDA
Formulation:	Liquid. Purified antibody supplied in 1x PBS buffer with 0.09% (w/v) sodium azide and 2% sucrose. <i>Note that this product is shipped as lyophilized powder to China customers.</i>
Concentration:	lot specific
Conjugation:	Unconjugated
Storage:	Store at -20°C as received.
Stability:	Stable for 12 months from date of receipt.
Predicted Protein Size:	35 kDa
Gene Name:	transmembrane protein 104
Database Link:	NP_060198 Entrez Gene 54868 Human Q8NE00
Background:	The function remains unknown.
Synonyms:	FLJ00021; FLJ20255
Note:	Immunogen Sequence Homology: Pig: 100%; Human: 100%; Rabbit: 100%; Guinea pig: 100%; Dog: 92%; Horse: 92%; Bovine: 85%; Rat: 79%
Protein Families:	Transmembrane



[View online »](#)

Product images:

WB Suggested Anti-TMEM104 Antibody Titration:
5.0 ug/ml; Positive Control: Jurkat cell lysate