

## Product datasheet for **TA342033**

### QPCTL Rabbit Polyclonal Antibody

#### Product data:

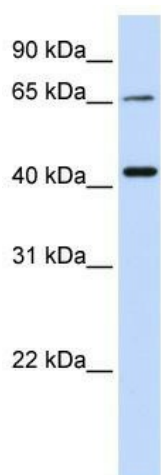
Product Type:	Primary Antibodies
Applications:	WB
Recommended Dilution:	WB
Reactivity:	Human
Host:	Rabbit
Isotype:	IgG
Clonality:	Polyclonal
Immunogen:	The immunogen for anti-QPCTL antibody: synthetic peptide directed towards the middle region of human QPCTL. Synthetic peptide located within the following region: QLLFLDGEEALKEWGPKDSLYGSRHLAQLMESIPHSPGPTRIQAIELFML
Formulation:	Liquid. Purified antibody supplied in 1x PBS buffer with 0.09% (w/v) sodium azide and 2% sucrose. <i>Note that this product is shipped as lyophilized powder to China customers.</i>
Concentration:	lot specific
Conjugation:	Unconjugated
Storage:	Store at -20°C as received.
Stability:	Stable for 12 months from date of receipt.
Predicted Protein Size:	43 kDa
Gene Name:	glutaminy-peptide cyclotransferase-like
Database Link:	<a href="#">NP_060129</a> <a href="#">Entrez Gene 54814 Human</a> <a href="#">Q9NXS2</a>
Background:	QPCTL is a single-pass membrane proteinPotential. It belongs toThe glutaminy-peptide cyclotransferase family.The exact function of QPCTL remains unknown.
Synonyms:	gQC
Note:	Immunogen Sequence Homology: Rat: 100%; Human: 100%; Mouse: 100%; Dog: 93%; Rabbit: 93%; Pig: 92%; Guinea pig: 92%; Horse: 86%



[View online »](#)

Protein Families: Protease, Transmembrane

### Product images:



WB Suggested Anti-QPCTL Antibody Titration: 0.2-1 ug/ml; ELISA Titer: 1: 12500; Positive Control: 721\_B cell lysate. QPCTL is supported by BioGPS gene expression data to be expressed in 721\_B