

Product datasheet for **TA342032**

CNNM2 Rabbit Polyclonal Antibody

Product data:

Product Type:	Primary Antibodies
Applications:	WB
Recommended Dilution:	WB
Reactivity:	Human
Host:	Rabbit
Isotype:	IgG
Clonality:	Polyclonal
Immunogen:	The immunogen for anti-CNNM2 antibody: synthetic peptide directed towards the middle region of human CNNM2. Synthetic peptide located within the following region: EIIKSEILDETDLYTDNRTKKKVAHRERKQDFSAFKQTDSEMVKVISPQL
Formulation:	Liquid. Purified antibody supplied in 1x PBS buffer with 0.09% (w/v) sodium azide and 2% sucrose. <i>Note that this product is shipped as lyophilized powder to China customers.</i>
Concentration:	lot specific
Conjugation:	Unconjugated
Storage:	Store at -20°C as received.
Stability:	Stable for 12 months from date of receipt.
Predicted Protein Size:	96 kDa
Gene Name:	cyclin and CBS domain divalent metal cation transport mediator 2
Database Link:	NP_060119 Entrez Gene 54805 Human Q9H8M5
Background:	This gene encodes a member of the ancient conserved domain containing protein family. Members of this protein family contain a cyclin box motif and have structural similarity to the cyclins. The encoded protein may play an important role in magnesium homeostasis by mediating the epithelial transport and renal reabsorption of Mg ²⁺ . Mutations in this gene are associated with renal hypomagnesemia. Alternatively spliced transcript variants encoding multiple isoforms have been observed for this gene. [provided by RefSeq, Dec 2011]



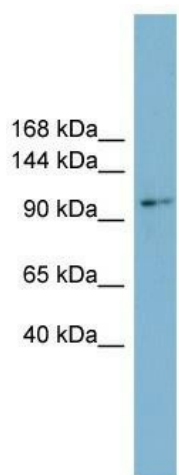
[View online »](#)

Synonyms: ACDP2; HOMG6; HOMGSMR

Note: Immunogen Sequence Homology: Dog: 100%; Pig: 100%; Rat: 100%; Goat: 100%; Horse: 100%; Human: 100%; Mouse: 100%; Bovine: 100%; Rabbit: 100%; Zebrafish: 100%; Guinea pig: 100%

Protein Families: Transmembrane

Product images:



WB Suggested Anti-CNNM2 Antibody Titration:
0.2-1 ug/ml; Positive Control: HT1080 cell lysate