

## Product datasheet for **TA342031**

### FA20A (FAM20A) Rabbit Polyclonal Antibody

#### Product data:

Product Type:	Primary Antibodies
Applications:	WB
Recommended Dilution:	WB
Reactivity:	Human
Host:	Rabbit
Isotype:	IgG
Clonality:	Polyclonal
Immunogen:	The immunogen for anti-FAM20A antibody: synthetic peptide directed towards the N terminal of human FAM20A. Synthetic peptide located within the following region: SKLLQDMRHFPTISADYSQDEKALLGACDCTQIVKPSGVHLKLVLRFSDF
Formulation:	Liquid. Purified antibody supplied in 1x PBS buffer with 0.09% (w/v) sodium azide and 2% sucrose. <i>Note that this product is shipped as lyophilized powder to China customers.</i>
Concentration:	lot specific
Conjugation:	Unconjugated
Storage:	Store at -20°C as received.
Stability:	Stable for 12 months from date of receipt.
Predicted Protein Size:	61 kDa
Gene Name:	family with sequence similarity 20 member A
Database Link:	<a href="#">NP_060035</a> <a href="#">Entrez Gene 54757 Human</a> <a href="#">Q96MK3</a>
Background:	This locus encodes a protein that is likely secreted and may function in hematopoiesis. A mutation at this locus has been associated with amelogenesis imperfecta and gingival hyperplasia syndrome. Alternatively spliced transcript variants have been identified. [provided by RefSeq, Aug 2011]
Synonyms:	A11G; AIGFS; FP2747

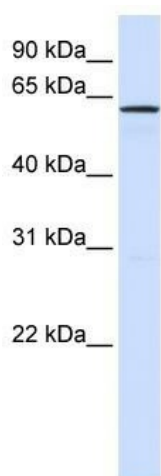


[View online »](#)

**Note:** Immunogen Sequence Homology: Pig: 100%; Horse: 100%; Human: 100%; Mouse: 100%; Bovine: 100%; Rabbit: 100%; Dog: 93%; Rat: 93%; Guinea pig: 86%

**Protein Families:** Secreted Protein, Transmembrane

**Product images:**



WB Suggested Anti-FAM20A Antibody Titration:  
0.2-1 ug/ml; ELISA Titer: 1: 62500; Positive  
Control: Human Liver