

## Product datasheet for **TA342030**

### A4GALT Rabbit Polyclonal Antibody

#### Product data:

Product Type:	Primary Antibodies
Applications:	WB
Recommended Dilution:	WB
Reactivity:	Human
Host:	Rabbit
Isotype:	IgG
Clonality:	Polyclonal
Immunogen:	The immunogen for anti-A4GALT antibody: synthetic peptide directed towards the middle region of human A4GALT. Synthetic peptide located within the following region: VLNGAFLAFERRHEFMALCMRDFVDHYNGWIWGHQGPQLLTRVFKKWC SI
Formulation:	Liquid. Purified antibody supplied in 1x PBS buffer with 0.09% (w/v) sodium azide and 2% sucrose. <i>Note that this product is shipped as lyophilized powder to China customers.</i>
Concentration:	lot specific
Conjugation:	Unconjugated
Storage:	Store at -20°C as received.
Stability:	Stable for 12 months from date of receipt.
Predicted Protein Size:	40 kDa
Gene Name:	alpha 1,4-galactosyltransferase
Database Link:	<a href="#">NP_059132</a> <a href="#">Entrez Gene 53947 Human</a> <a href="#">Q9NPC4</a>
Background:	The protein encoded byThis gene catalyzesThe transfer of galactose to lactosylceramide to form globotriaosylceramide, which has been identified asThe P(k) antigen ofThe P blood group system.The encoded protein, which is a type II membrane protein found inThe Golgi, is also required forThe synthesis ofThe bacterial verotoxins receptor. [provided by RefSeq, Jul 2008]
Synonyms:	A4GALT1; A14GALT; Gb3S; P(k); P1; P1PK; PK



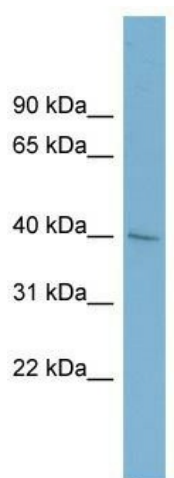
[View online »](#)

**Note:** Immunogen Sequence Homology: Dog: 100%; Pig: 100%; Rat: 100%; Human: 100%; Mouse: 100%; Bovine: 100%; Rabbit: 100%; Guinea pig: 100%

**Protein Families:** Druggable Genome, Transmembrane

**Protein Pathways:** Glycosphingolipid biosynthesis - globo series, Metabolic pathways

**Product images:**



WB Suggested Anti-A4GALT Antibody Titration:  
0.2-1 ug/ml; ELISA Titer: 1: 312500; Positive  
Control: HT1080 cell lysate