

Product datasheet for **TA342028**

ADA2 Rabbit Polyclonal Antibody

Product data:

Product Type:	Primary Antibodies
Applications:	WB
Recommended Dilution:	WB
Reactivity:	Human
Host:	Rabbit
Isotype:	IgG
Clonality:	Polyclonal
Immunogen:	The immunogen for anti-CECR1 antibody: synthetic peptide directed towards the N terminal of human CECR1. Synthetic peptide located within the following region: MQFRFAHPTPRPSEKCSKWILLEDYRKRQNVTEFDDSLRNFTLVLTQHP
Formulation:	Liquid. Purified antibody supplied in 1x PBS buffer with 0.09% (w/v) sodium azide and 2% sucrose. <i>Note that this product is shipped as lyophilized powder to China customers.</i>
Concentration:	lot specific
Conjugation:	Unconjugated
Storage:	Store at -20°C as received.
Stability:	Stable for 12 months from date of receipt.
Predicted Protein Size:	56 kDa
Gene Name:	cat eye syndrome chromosome region, candidate 1
Database Link:	NP_059120 Entrez Gene 51816 Human Q9NZK5
Background:	This gene encodes a member of a subfamily of the adenosine deaminase protein family. The encoded protein is one of two adenosine deaminases found in humans, which regulate levels of the signaling molecule, adenosine. The encoded protein is secreted from monocytes undergoing differentiation and may regulate cell proliferation and differentiation. This gene may be responsible for some of the phenotypic features associated with cat eye syndrome. Alternative splicing results in multiple transcript variants. [provided by RefSeq, Aug 2013]



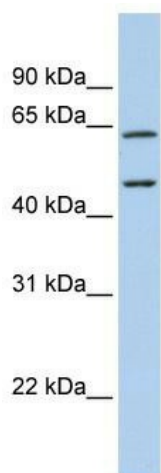
[View online »](#)

Synonyms: ADA2; ADGF; IDGFL

Note: Immunogen Sequence Homology: Human: 100%

Protein Families: Druggable Genome, Secreted Protein, Transmembrane

Product images:



WB Suggested Anti-CECR1 Antibody Titration: 0.2-1 ug/ml; ELISA Titer: 1: 312500; Positive Control: Human brain