

## Product datasheet for **TA342025**

### **DLL3 Rabbit Polyclonal Antibody**

#### **Product data:**

<b>Product Type:</b>	Primary Antibodies
<b>Applications:</b>	WB
<b>Recommended Dilution:</b>	WB
<b>Reactivity:</b>	Human
<b>Host:</b>	Rabbit
<b>Isotype:</b>	IgG
<b>Clonality:</b>	Polyclonal
<b>Immunogen:</b>	The immunogen for Anti-DLL3 antibody is: synthetic peptide directed towards the C-terminal region of Human DLL3. Synthetic peptide located within the following region: LVCACAPGYMGARCEFPVHPDGASALPAAPPGLRPGDPQRYLLPPALGLL
<b>Formulation:</b>	Liquid. Purified antibody supplied in 1x PBS buffer with 0.09% (w/v) sodium azide and 2% sucrose. <i>Note that this product is shipped as lyophilized powder to China customers.</i>
<b>Concentration:</b>	lot specific
<b>Purification:</b>	Affinity Purified
<b>Conjugation:</b>	Unconjugated
<b>Storage:</b>	Store at -20°C as received.
<b>Stability:</b>	Stable for 12 months from date of receipt.
<b>Predicted Protein Size:</b>	64 kDa
<b>Gene Name:</b>	delta like canonical Notch ligand 3
<b>Database Link:</b>	<a href="#">NP_982353</a> <a href="#">Entrez Gene 10683 Human</a> <a href="#">Q9NYJ7</a>
<b>Background:</b>	This gene encodes a member of the delta protein ligand family. This family functions as Notch ligands that are characterized by a DSL domain, EGF repeats, and a transmembrane domain. Mutations in this gene cause autosomal recessive spondylocostal dysostosis 1. Two transcript variants encoding distinct isoforms have been identified for this gene. [provided by RefSeq, Jul 2008]



[View online »](#)

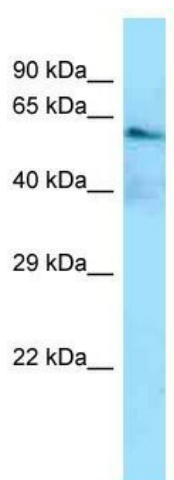
**Synonyms:** SCDO1

**Note:** Immunogen Sequence Homology: Human: 100%; Pig: 93%; Bovine: 86%; Mouse: 79%

**Protein Families:** Cancer stem cells, Druggable Genome, ES Cell Differentiation/IPS, Stem cell relevant signaling - DSL/Notch pathway, Transmembrane

**Protein Pathways:** Notch signaling pathway

### Product images:



Host: Rabbit; Target Name: DLL3; Sample Tissue: HeLa Whole cell lysates; Antibody Dilution: 1.0 ug/ml