

## Product datasheet for **TA342024**

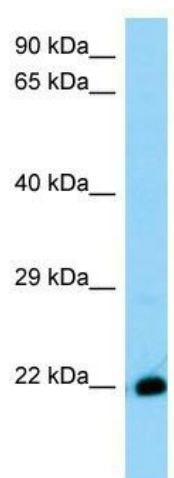
### **C8orf55 (THEM6) Rabbit Polyclonal Antibody**

#### **Product data:**

<b>Product Type:</b>	Primary Antibodies
<b>Applications:</b>	WB
<b>Recommended Dilution:</b>	WB
<b>Reactivity:</b>	Mouse
<b>Host:</b>	Rabbit
<b>Isotype:</b>	IgG
<b>Clonality:</b>	Polyclonal
<b>Immunogen:</b>	The immunogen for Anti-4930572J05Rik antibody is: synthetic peptide directed towards the C-terminal region of Mouse 4930572J05Rik. Synthetic peptide located within the following region: RRSLRLFEPFEVHTRLQGWDDRAFYLEARFVSLRDGFVCALLRFRQHVLG
<b>Formulation:</b>	Liquid. Purified antibody supplied in 1x PBS buffer with 0.09% (w/v) sodium azide and 2% sucrose. <i>Note that this product is shipped as lyophilized powder to China customers.</i>
<b>Concentration:</b>	lot specific
<b>Conjugation:</b>	Unconjugated
<b>Storage:</b>	Store at -20°C as received.
<b>Stability:</b>	Stable for 12 months from date of receipt.
<b>Predicted Protein Size:</b>	24 kDa
<b>Gene Name:</b>	thioesterase superfamily member 6
<b>Database Link:</b>	<a href="#">NP_057731</a> <a href="#">Entrez Gene 223626 Mouse</a> <a href="#">Q8WUY1</a>
<b>Background:</b>	The function of This protein remains unknown.
<b>Synonyms:</b>	C8orf55; DSCD75
<b>Note:</b>	Immunogen Sequence Homology: Rat: 100%; Human: 100%; Mouse: 100%; Dog: 93%; Pig: 93%; Guinea pig: 93%; Bovine: 86%
<b>Protein Families:</b>	Transmembrane



[View online »](#)

**Product images:**

WB Suggested Anti-4930572J05Rik Antibody;  
Titration: 1.0 ug/ml; Positive Control: Mouse  
Stomach