

Product datasheet for **TA342023**

MIR16 (GDE1) Rabbit Polyclonal Antibody

Product data:

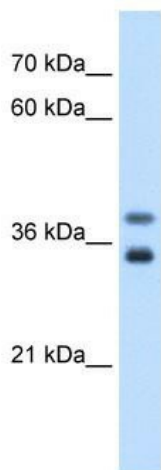
Product Type:	Primary Antibodies
Applications:	IHC, WB
Recommended Dilution:	WB, IHC
Reactivity:	Human
Host:	Rabbit
Isotype:	IgG
Clonality:	Polyclonal
Immunogen:	The immunogen for anti-GDE1 antibody: synthetic peptide directed towards the N terminal of human GDE1. Synthetic peptide located within the following region: LRVFSFEPVPSCRALQVLKPRDRISAIAHRGGSHDAPENTLAAIRQAAKN
Formulation:	Liquid. Purified antibody supplied in 1x PBS buffer with 0.09% (w/v) sodium azide and 2% sucrose. <i>Note that this product is shipped as lyophilized powder to China customers.</i>
Concentration:	lot specific
Conjugation:	Unconjugated
Storage:	Store at -20°C as received.
Stability:	Stable for 12 months from date of receipt.
Predicted Protein Size:	38 kDa
Gene Name:	glycerophosphodiester phosphodiesterase 1
Database Link:	NP_057725 Entrez Gene 51573 Human Q9NZC3
Background:	Has glycerophosphoinositol phosphodiesterase activity. Has little or no activity towards glycerophosphocholine. GDE1 activity can be modulated by G-protein signaling pathways.
Synonyms:	363E6.2; MIR16
Note:	Immunogen Sequence Homology: Dog: 100%; Pig: 100%; Rat: 100%; Human: 100%; Mouse: 100%; Bovine: 100%; Rabbit: 100%; Guinea pig: 100%; Horse: 93%; Zebrafish: 86%



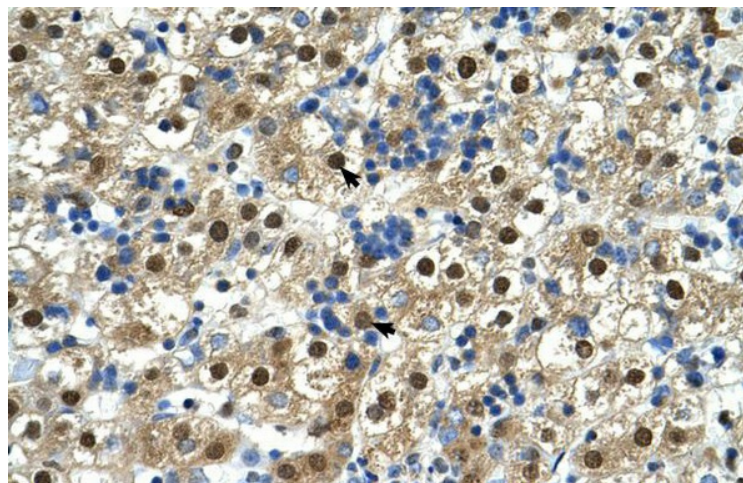
[View online »](#)

Protein Families: Transmembrane
 Protein Pathways: Glycerophospholipid metabolism

Product images:



WB Suggested Anti-GDE1 Antibody Titration: 0.2-1 ug/ml; Positive Control: Jurkat cell lysate



Human Liver