

Product datasheet for **TA342021**

ARMCX3 Rabbit Polyclonal Antibody

Product data:

Product Type:	Primary Antibodies
Applications:	WB
Recommended Dilution:	WB
Reactivity:	Human
Host:	Rabbit
Isotype:	IgG
Clonality:	Polyclonal
Immunogen:	The immunogen for anti-ARMCX3 antibody: synthetic peptide directed towards the middle region of human ARMCX3. Synthetic peptide located within the following region: LFSAGNEETKLQVLKLLLNLAENPAMTRELLRAQVPSSLGSLFNKKENKE
Formulation:	Liquid. Purified antibody supplied in 1x PBS buffer with 0.09% (w/v) sodium azide and 2% sucrose. <i>Note that this product is shipped as lyophilized powder to China customers.</i>
Concentration:	lot specific
Conjugation:	Unconjugated
Storage:	Store at -20°C as received.
Stability:	Stable for 12 months from date of receipt.
Predicted Protein Size:	42 kDa
Gene Name:	armadillo repeat containing, X-linked 3
Database Link:	NP_057691 Entrez Gene 51566 Human Q9UH62
Background:	This gene encodes a member of the ALEX family of proteins which may play a role in tumor suppression. The encoded protein contains a potential N-terminal transmembrane domain and a single Armadillo (arm) repeat. Other proteins containing the arm repeat are involved in development, maintenance of tissue integrity, and tumorigenesis. This gene is closely localized with other family members on the X chromosome. Three transcript variants encoding the same protein have been identified for this gene. [provided by RefSeq, Jul 2008]



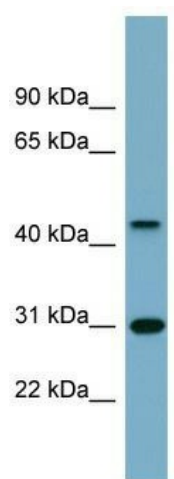
[View online »](#)

Synonyms: ALEX3; dJ545K15.2; GASP6

Note: Immunogen Sequence Homology: Pig: 100%; Rat: 100%; Horse: 100%; Human: 100%; Mouse: 100%; Bovine: 100%; Rabbit: 100%; Dog: 93%

Protein Families: Transmembrane

Product images:



WB Suggested Anti-ARMCX3 Antibody Titration:
0.2-1 ug/ml; Positive Control: Human Spleen