

Product datasheet for **TA342018**

PCDH12 Rabbit Polyclonal Antibody

Product data:

Product Type:	Primary Antibodies
Applications:	WB
Recommended Dilution:	WB
Reactivity:	Human
Host:	Rabbit
Isotype:	IgG
Clonality:	Polyclonal
Immunogen:	The immunogen for anti-PCDH12 antibody: synthetic peptide directed towards the middle region of human PCDH12. Synthetic peptide located within the following region: SSRPFLTTIVARDADSGANGEPLYSIRSGNEAHLFILNPHTGQLFVNVT
Formulation:	Liquid. Purified antibody supplied in 1x PBS buffer with 0.09% (w/v) sodium azide and 2% sucrose. <i>Note that this product is shipped as lyophilized powder to China customers.</i>
Concentration:	lot specific
Conjugation:	Unconjugated
Storage:	Store at -20°C as received.
Stability:	Stable for 12 months from date of receipt.
Predicted Protein Size:	126 kDa
Gene Name:	protocadherin 12
Database Link:	NP_057664 Entrez Gene 51294 Human Q9NPG4



[View online »](#)

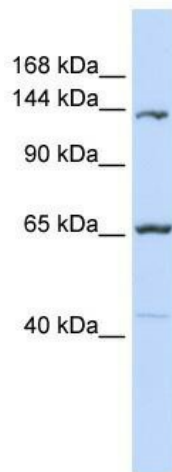
Background: This gene belongs to the protocadherin gene family, a subfamily of the cadherin superfamily. The encoded protein consists of an extracellular domain containing 6 cadherin repeats, a transmembrane domain and a cytoplasmic tail that differs from those of the classical cadherins. The gene localizes to the region on chromosome 5 where the protocadherin gene clusters reside. The exon organization of this transcript is similar to that of the gene cluster transcripts, notably the first large exon, but no significant sequence homology exists. The function of this cellular adhesion protein is undetermined but mouse protocadherin 12 does not bind catenins and appears to have no effect on cell migration or growth. [provided by RefSeq, Jul 2008]

Synonyms: VE-cadherin-2; VECAD2

Note: Immunogen Sequence Homology: Human: 100%; Dog: 92%; Pig: 92%; Rat: 86%; Horse: 86%; Bovine: 85%; Guinea pig: 85%

Protein Families: Transmembrane

Product images:



WB Suggested Anti-PCDH12 Antibody Titration:
0.2-1 ug/ml; ELISA Titer: 1: 312500; Positive
Control: MCF7 cell lysate