

## Product datasheet for TA342017

### CEND1 Rabbit Polyclonal Antibody

#### Product data:

Product Type:	Primary Antibodies
Applications:	WB
Recommended Dilution:	WB
Reactivity:	Human
Host:	Rabbit
Isotype:	IgG
Clonality:	Polyclonal
Immunogen:	The immunogen for anti-CEND1 antibody: synthetic peptide directed towards the N terminal of human CEND1. Synthetic peptide located within the following region: MESRGKSASSPKPDTKVPQVTTEAKVPPAADGKAPLTKPSKKEAPEKQQ
Formulation:	Liquid. Purified antibody supplied in 1x PBS buffer with 0.09% (w/v) sodium azide and 2% sucrose. <i>Note that this product is shipped as lyophilized powder to China customers.</i>
Concentration:	lot specific
Conjugation:	Unconjugated
Storage:	Store at -20°C as received.
Stability:	Stable for 12 months from date of receipt.
Predicted Protein Size:	15 kDa
Gene Name:	cell cycle exit and neuronal differentiation 1
Database Link:	<a href="#">NP_057648</a> <a href="#">Entrez Gene 51286 Human</a> <a href="#">Q8N111</a>
Background:	The protein encoded byThis gene is a neuron-specific protein.The similar protein in pig enhances neuroblastoma cell differentiation in vitro and may be involved in neuronal differentiation in vivo. Multiple pseudogenes have been reported forThis gene. [provided by RefSeq, Jul 2008]
Synonyms:	BM88

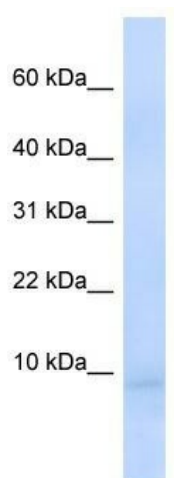


[View online »](#)

**Note:** Immunogen Sequence Homology: Rat: 100%; Horse: 100%; Human: 100%; Mouse: 100%; Dog: 86%; Pig: 86%; Guinea pig: 86%

**Protein Families:** Transmembrane

**Product images:**



WB Suggested Anti-CEND1 Antibody Titration:  
0.2-1 ug/ml; ELISA Titer: 1: 62500; Positive  
Control: Human Liver