

## Product datasheet for **TA342016**

### **KLRF1 Rabbit Polyclonal Antibody**

#### **Product data:**

Product Type:	Primary Antibodies
Applications:	WB
Recommended Dilution:	WB
Reactivity:	Human
Host:	Rabbit
Isotype:	IgG
Clonality:	Polyclonal
Immunogen:	The immunogen for anti-KLRF1 antibody: synthetic peptide directed towards the middle region of human KLRF1. Synthetic peptide located within the following region: QKGSCSNATQYEDTGDLKVNNGTRRNISNKDLCASRSADQTVLCQSEWLK
Formulation:	Liquid. Purified antibody supplied in 1x PBS buffer with 0.09% (w/v) sodium azide and 2% sucrose. <i>Note that this product is shipped as lyophilized powder to China customers.</i>
Concentration:	lot specific
Conjugation:	Unconjugated
Storage:	Store at -20°C as received.
Stability:	Stable for 12 months from date of receipt.
Predicted Protein Size:	26 kDa
Gene Name:	killer cell lectin like receptor F1
Database Link:	<a href="#">NP_057607</a> <a href="#">Entrez Gene 51348 Human</a> <a href="#">Q9NZS2</a>



[View online »](#)

**Background:**

KLRF1, an activating homodimeric C-type lectin-like receptor (CTLR), is expressed on nearly all natural killer (NK) cells and stimulates their cytotoxicity and cytokine release (Kuttruff et al., 2009 [PubMed 18922855]). [supplied by OMIM, Oct 2009]. Transcript Variant: This variant (KLRF1-s3) lacks three alternate coding exons that result in a frameshift in the 3' coding region, compared to variant 1. The encoded isoform (KLRF1-s3) has a distinct C-terminus and is significantly shorter than isoform 1. ##Evidence-Data-START## Transcript exon combination :: AF267245.1 [ECO:0000332] RNAseq introns :: mixed/partial sample support ERS025084, ERS025085 [ECO:0000350] ##Evidence-Data-END## COMPLETENESS: complete on the 3' end.

**Synonyms:**

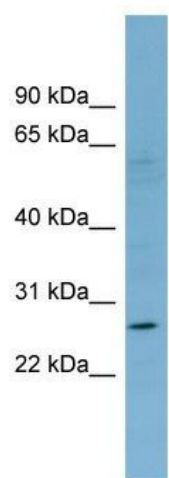
CLEC5C; NKp80

**Note:**

Immunogen Sequence Homology: Human: 100%

**Protein Families:**

Transmembrane

**Product images:**

WB Suggested Anti-KLRF1 Antibody Titration: 0.2-1 ug/ml; Positive Control: COLO205 cell lysate