

## Product datasheet for **TA342015**

### TMEM69 Rabbit Polyclonal Antibody

#### Product data:

Product Type:	Primary Antibodies
Applications:	IHC, WB
Recommended Dilution:	WB, IHC
Reactivity:	Human
Host:	Rabbit
Isotype:	IgG
Clonality:	Polyclonal
Immunogen:	The immunogen for anti-TMEM69 antibody: synthetic peptide directed towards the middle region of human TMEM69. Synthetic peptide located within the following region: AYGASFLSFLGGIRWGFALPEGSPAKEYLNLASSAAPLFFSWFAFLISE
Formulation:	Liquid. Purified antibody supplied in 1x PBS buffer with 0.09% (w/v) sodium azide and 2% sucrose. <i>Note that this product is shipped as lyophilized powder to China customers.</i>
Concentration:	lot specific
Conjugation:	Unconjugated
Storage:	Store at -20°C as received.
Stability:	Stable for 12 months from date of receipt.
Predicted Protein Size:	27 kDa
Gene Name:	transmembrane protein 69
Database Link:	<a href="#">NP_057570</a> <a href="#">Entrez Gene 51249 Human Q5SWH9</a>
Background:	The function remains unknown.
Synonyms:	C1orf154
Note:	Immunogen Sequence Homology: Human: 100%; Rat: 93%; Horse: 93%; Dog: 86%; Pig: 86%; Mouse: 86%; Rabbit: 86%; Guinea pig: 86%; Zebrafish: 85%
Protein Families:	Transmembrane

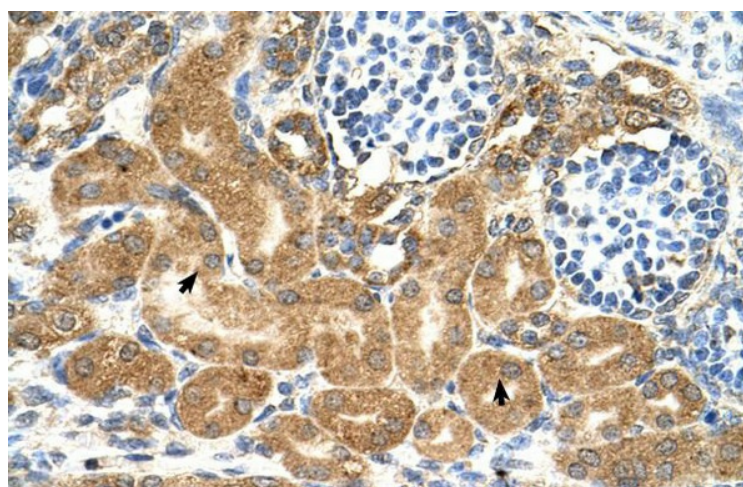


[View online »](#)

## Product images:



WB Suggested Anti-TMEM69 Antibody Titration:  
0.5 ug/ml; Positive Control: HepG2 cell lysate



Human kidney