

Product datasheet for **TA342013**

TMEM138 Rabbit Polyclonal Antibody

Product data:

Product Type:	Primary Antibodies
Applications:	WB
Recommended Dilution:	WB
Reactivity:	Human
Host:	Rabbit
Isotype:	IgG
Clonality:	Polyclonal
Immunogen:	The immunogen for anti-TMEM138 antibody: synthetic peptide directed towards the N terminal of human TMEM138. Synthetic peptide located within the following region: MLQTSNYSLVLSLQFLLLSYDLFVNSFSELLQKTPVIQLVLFIIQDIAVL
Formulation:	Liquid. Purified antibody supplied in 1x PBS buffer with 0.09% (w/v) sodium azide and 2% sucrose.
Concentration:	lot specific
Conjugation:	Unconjugated
Storage:	Store at -20°C as received.
Stability:	Stable for 12 months from date of receipt.
Predicted Protein Size:	19 kDa
Gene Name:	transmembrane protein 138
Database Link:	NP_057548 Entrez Gene 51524 Human Q9NPI0
Background:	This gene encodes a multi-pass transmembrane protein. Reduced expression of This gene in mouse fibroblasts causes short cilia and failure of ciliogenesis. Expression of This gene is tightly coordinated with expression of The neighboring gene TMEM216. Mutations in This gene are associated with The autosomal recessive neurodevelopmental disorder Joubert Syndrome. Alternative splicing results in multiple transcript variants. [provided by RefSeq, Mar 2012]
Synonyms:	HSPC196

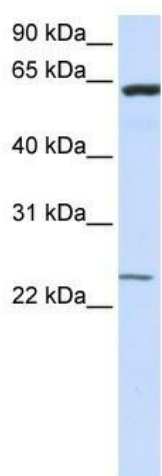


[View online »](#)

Note: Immunogen Sequence Homology: Human: 100%; Dog: 79%; Pig: 79%; Rat: 79%; Goat: 79%; Horse: 79%; Mouse: 79%; Bovine: 79%; Rabbit: 79%; Zebrafish: 79%

Protein Families: Transmembrane

Product images:



WB Suggested Anti-TMEM138 Antibody Titration:
0.2-1 ug/ml; ELISA Titer: 1: 312500; Positive
Control: Human brain