

Product datasheet for **TA342011**

PTPLAD1 (HACD3) Rabbit Polyclonal Antibody

Product data:

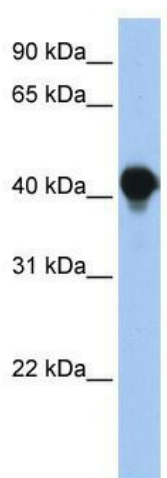
Product Type:	Primary Antibodies
Applications:	WB
Recommended Dilution:	WB
Reactivity:	Human
Host:	Rabbit
Isotype:	IgG
Clonality:	Polyclonal
Immunogen:	The immunogen for anti-PTPLAD1 antibody: synthetic peptide directed towards the N terminal of human PTPLAD1. Synthetic peptide located within the following region: WLDESDAEMELRAKEEERLNKLRLESEGSPETLTNLRKGYLFMYNLVQFL
Formulation:	Liquid. Purified antibody supplied in 1x PBS buffer with 0.09% (w/v) sodium azide and 2% sucrose.
Concentration:	lot specific
Conjugation:	Unconjugated
Storage:	Store at -20°C as received.
Stability:	Stable for 12 months from date of receipt.
Predicted Protein Size:	43 kDa
Gene Name:	3-hydroxyacyl-CoA dehydratase 3
Database Link:	NP_057479 Entrez Gene 51495 Human Q9P035
Background:	PTPLAD1 is a multi-pass membrane protein. It belongs to the PTPLA family and contains 1 CS domain. PTPLAD1 (hB-ind1) plays a crucial role in HCV RNA replication and the propagation of JFH1 virus through interaction with viral and host proteins. It is involved in Rac1-signaling pathways leading to the modulation of gene expression.
Synonyms:	B-IND1; BIND1; HSPC121; PTPLAD1
Note:	Immunogen Sequence Homology: Pig: 100%; Rat: 100%; Horse: 100%; Human: 100%; Mouse: 100%; Rabbit: 100%; Guinea pig: 100%; Dog: 93%; Bovine: 93%



[View online »](#)

Protein Families: Transmembrane

Product images:



WB Suggested Anti-PTPLAD1 Antibody Titration:
0.2-1 ug/ml; Positive Control: Human Muscle