

Product datasheet for **TA342010**

Glycoprotein VI (GP6) Rabbit Polyclonal Antibody

Product data:

Product Type:	Primary Antibodies
Applications:	WB
Recommended Dilution:	WB
Reactivity:	Human
Host:	Rabbit
Isotype:	IgG
Clonality:	Polyclonal
Immunogen:	The immunogen for anti-GP6 antibody: synthetic peptide directed towards the middle region of human GP6. Synthetic peptide located within the following region: PPSPVAEFSEATAELTVSFTNEVFTTETSRISITASPKESDSPAGPARQYY
Formulation:	Liquid. Purified antibody supplied in 1x PBS buffer with 0.09% (w/v) sodium azide and 2% sucrose. <i>Note that this product is shipped as lyophilized powder to China customers.</i>
Concentration:	lot specific
Conjugation:	Unconjugated
Storage:	Store at -20°C as received.
Stability:	Stable for 12 months from date of receipt.
Predicted Protein Size:	37 kDa
Gene Name:	glycoprotein VI platelet
Database Link:	NP_057447 Entrez Gene 51206 Human Q9HCN6



[View online »](#)

Background:

This gene encodes a platelet membrane glycoprotein of the immunoglobulin superfamily. The encoded protein is a receptor for collagen and plays a critical role in collagen-induced platelet aggregation and thrombus formation. The encoded protein forms a complex with the Fc receptor gamma-chain that initiates the platelet activation signaling cascade upon collagen binding. Mutations in this gene are a cause of platelet-type bleeding disorder-11 (BDPLT11). Alternatively spliced transcript variants encoding multiple isoforms have been observed for this gene. [provided by RefSeq, Dec 2011]

Synonyms:

BDPLT11; GPIV; GPVI

Note:

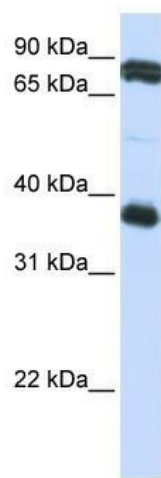
Immunogen Sequence Homology: Human: 100%

Protein Families:

Druggable Genome, Transmembrane

Protein Pathways:

ECM-receptor interaction

Product images:

WB Suggested Anti-GP6 Antibody Titration: 0.2-1 ug/ml; ELISA Titer: 1: 1562500; Positive Control: Jurkat cell lysate