

Product datasheet for **TA342009**

DNAJB11 Rabbit Polyclonal Antibody

Product data:

Product Type:	Primary Antibodies
Applications:	WB
Recommended Dilution:	WB
Reactivity:	Human
Host:	Rabbit
Isotype:	IgG
Clonality:	Polyclonal
Immunogen:	The immunogen for anti-DNAJB11 antibody: synthetic peptide directed towards the C terminal of human DNAJB11. Synthetic peptide located within the following region: FDNNNIKGLIITFDVDFPKEQLTEEAREGIKQLLKQGSVQKVYNGLQGY
Formulation:	Liquid. Purified antibody supplied in 1x PBS buffer with 0.09% (w/v) sodium azide and 2% sucrose. <i>Note that this product is shipped as lyophilized powder to China customers.</i>
Concentration:	lot specific
Conjugation:	Unconjugated
Storage:	Store at -20°C as received.
Stability:	Stable for 12 months from date of receipt.
Predicted Protein Size:	40 kDa
Gene Name:	DnaJ heat shock protein family (Hsp40) member B11
Database Link:	NP_057390 Entrez Gene 51726 Human Q9UBS4

Background: This gene encodes a soluble glycoprotein of the endoplasmic reticulum (ER) lumen that functions as a co-chaperone of binding immunoglobulin protein, a 70 kilodalton heat shock protein chaperone required for the proper folding and assembly of proteins in the ER. The encoded protein contains a highly conserved J domain of about 70 amino acids with a characteristic His-Pro-Asp (HPD) motif and may regulate the activity of binding immunoglobulin protein by stimulating ATPase activity. [provided by RefSeq, Mar 2014]



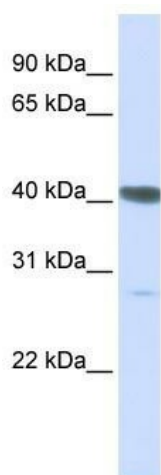
[View online »](#)

Synonyms: ABBP-2; ABBP2; Dj-9; DJ9; EDJ; ERdj3; ERj3; ERj3p; PRO1080; UNQ537

Note: Immunogen Sequence Homology: Dog: 100%; Pig: 100%; Rat: 100%; Horse: 100%; Human: 100%; Bovine: 100%; Zebrafish: 100%; Guinea pig: 100%; Mouse: 93%; Rabbit: 93%

Protein Families: Transmembrane

Product images:



WB Suggested Anti-DNAJB11 Antibody Titration:
0.2-1 ug/ml; ELISA Titer: 1: 312500; Positive
Control: HepG2 cell lysate