

Product datasheet for **TA342007**

IMPG2 Rabbit Polyclonal Antibody

Product data:

Product Type:	Primary Antibodies
Applications:	WB
Recommended Dilution:	WB
Reactivity:	Human
Host:	Rabbit
Isotype:	IgG
Clonality:	Polyclonal
Immunogen:	The immunogen for anti-IMPG2 antibody: synthetic peptide directed towards the C terminal of human IMPG2. Synthetic peptide located within the following region: VVFSLRVTNMMFSEDLFNKNSLEYKALEQRFLLELLVPYLQSNLTGFQNL
Formulation:	Liquid. Purified antibody supplied in 1x PBS buffer with 0.09% (w/v) sodium azide and 2% sucrose.
Concentration:	lot specific
Conjugation:	Unconjugated
Storage:	Store at -20°C as received.
Stability:	Stable for 12 months from date of receipt.
Predicted Protein Size:	138 kDa
Gene Name:	interphotoreceptor matrix proteoglycan 2
Database Link:	NP_057331 Entrez Gene 50939 Human Q9BZV3
Background:	The protein encoded byThis gene binds chondroitin sulfate and hyaluronan and is a proteoglycan.The encoded protein plays a role inThe organization ofThe interphotoreceptor matrix and may promoteThe growth and maintenance ofThe light-sensitive photoreceptor outer segment. Defects inThis gene are a cause of retinitis pigmentosa type 56 and maculopathy, IMPG2-related. [provided by RefSeq, Mar 2011]
Synonyms:	IPM200; RP56; SPACRCAN; VMD5

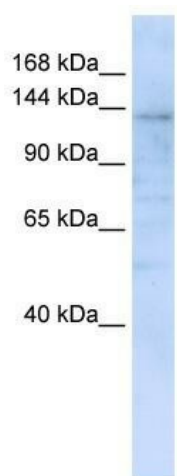


[View online »](#)

Note: Immunogen Sequence Homology: Dog: 100%; Rat: 100%; Horse: 100%; Human: 100%; Mouse: 100%; Bovine: 100%; Rabbit: 100%; Pig: 93%; Guinea pig: 93%; Zebrafish: 86%

Protein Families: Druggable Genome, Transmembrane

Product images:



WB Suggested Anti-IMPG2 Antibody Titration: 0.2-1 ug/ml; ELISA Titer: 1: 62500; Positive Control: 293T cell lysate