

Product datasheet for **TA342005**

ST2 (IL1RL1) Rabbit Polyclonal Antibody

Product data:

| | |
|-------------------------|--|
| Product Type: | Primary Antibodies |
| Applications: | WB |
| Recommended Dilution: | WB |
| Reactivity: | Human |
| Host: | Rabbit |
| Isotype: | IgG |
| Clonality: | Polyclonal |
| Immunogen: | The immunogen for anti-IL1RL1 antibody: synthetic peptide directed towards the N terminal of human IL1RL1. Synthetic peptide located within the following region: RQGKPSYTVDWYYSQTNKSIPTQERNRVFASGQLLKFLPAAVADSGIYTC |
| Formulation: | Liquid. Purified antibody supplied in 1x PBS buffer with 0.09% (w/v) sodium azide and 2% sucrose. <i>Note that this product is shipped as lyophilized powder to China customers.</i> |
| Concentration: | lot specific |
| Conjugation: | Unconjugated |
| Storage: | Store at -20°C as received. |
| Stability: | Stable for 12 months from date of receipt. |
| Predicted Protein Size: | 61 kDa |
| Gene Name: | interleukin 1 receptor like 1 |
| Database Link: | NP_057316 Entrez Gene 9173 Human Q01638 |
| Background: | The protein encoded byThis gene is a member ofThe interleukin 1 receptor family. Studies ofThe similar gene in mouse suggested thatThis receptor can be induced by proinflammatory stimuli, and may be involved inThe function of helper T cells.This gene, interleukin 1 receptor, type I (IL1R1), interleukin 1 receptor, type II (IL1R2) and interleukin 1 receptor-like 2 (IL1RL2) form a cytokine receptor gene cluster in a region mapped to chromosome 2q12. Alternative splicing ofThis gene results in multiple transcript variants. [provided by RefSeq, Jul 2008] |



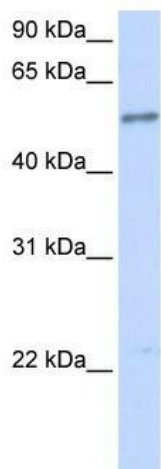
[View online »](#)

Synonyms: DER4; FIT-1; IL33R; ST2; ST2L; ST2V; T1

Note: Immunogen Sequence Homology: Human: 100%; Dog: 79%; Mouse: 79%

Protein Families: Druggable Genome, Secreted Protein, Transmembrane

Product images:



WB Suggested Anti-IL1RL1 Antibody Titration: 0.2-1 ug/ml; ELISA Titer: 1: 312500; Positive Control: Human brain