

Product datasheet for **TA342003**

SDF4 Rabbit Polyclonal Antibody

Product data:

Product Type:	Primary Antibodies
Applications:	WB
Recommended Dilution:	WB
Reactivity:	Human
Host:	Rabbit
Isotype:	IgG
Clonality:	Polyclonal
Immunogen:	The immunogen for anti-SDF4 antibody: synthetic peptide directed towards the middle region of human SDF4. Synthetic peptide located within the following region: KTHFRAVDPDGDGHVSWDEYKVKFLASKGHSEKEVADAIRLNELKVDDE
Formulation:	Liquid. Purified antibody supplied in 1x PBS buffer with 0.09% (w/v) sodium azide and 2% sucrose. <i>Note that this product is shipped as lyophilized powder to China customers.</i>
Concentration:	lot specific
Conjugation:	Unconjugated
Storage:	Store at -20°C as received.
Stability:	Stable for 12 months from date of receipt.
Predicted Protein Size:	39 kDa
Gene Name:	stromal cell derived factor 4
Database Link:	NP_057631 Entrez Gene 51150 Human Q9BRK5
Background:	This gene encodes a stromal cell derived factor that is a member of the CREC protein family. The encoded protein contains six EF-hand motifs and calcium-binding motifs. This protein localizes to the Golgi lumen and may be involved in regulating calcium dependent cellular activities. [provided by RefSeq, Sep 2011]
Synonyms:	Cab45; SDF-4

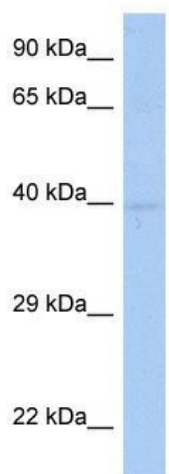


[View online »](#)

Note: Immunogen Sequence Homology: Pig: 100%; Rat: 100%; Horse: 100%; Human: 100%; Mouse: 100%; Guinea pig: 100%; Dog: 92%; Goat: 92%; Bovine: 92%; Zebrafish: 92%

Protein Families: Transmembrane

Product images:



WB Suggested Anti-SDF4 Antibody Titration: 0.2-1 ug/ml; ELISA Titer: 1: 312500; Positive Control: Human Small Intestine