

Product datasheet for **TA341999**

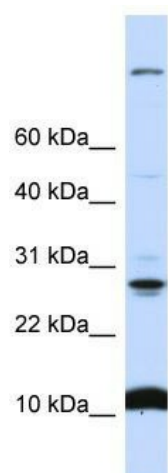
C19orf56 (WDR83OS) Rabbit Polyclonal Antibody

Product data:

Product Type:	Primary Antibodies
Applications:	WB
Recommended Dilution:	WB
Reactivity:	Human
Host:	Rabbit
Isotype:	IgG
Clonality:	Polyclonal
Immunogen:	The immunogen for anti-C19orf56 antibody: synthetic peptide directed towards the N terminal of human C19orf56. Synthetic peptide located within the following region: STNNMSDPRRPNKVLRYPKPPSECNPALDDPTDYMNLLGMIFSMCGLML
Formulation:	Liquid. Purified antibody supplied in 1x PBS buffer with 0.09% (w/v) sodium azide and 2% sucrose. <i>Note that this product is shipped as lyophilized powder to China customers.</i>
Concentration:	lot specific
Conjugation:	Unconjugated
Storage:	Store at -20°C as received.
Stability:	Stable for 12 months from date of receipt.
Predicted Protein Size:	12 kDa
Gene Name:	WD repeat domain 83 opposite strand
Database Link:	NP_057229 Entrez Gene 51398 Human Q9Y284
Background:	The exact function of C19orf56 remains unknown.
Synonyms:	C19orf56; PTD008
Note:	Immunogen Sequence Homology: Dog: 100%; Pig: 100%; Rat: 100%; Horse: 100%; Human: 100%; Mouse: 100%; Bovine: 100%; Rabbit: 100%; Guinea pig: 100%
Protein Families:	Transmembrane



[View online »](#)

Product images:

WB Suggested Anti-C19orf56 Antibody Titration: 0.2-1 ug/ml; ELISA Titer: 1: 312500; Positive Control: 721_B cell lysate. WDR83OS is supported by BioGPS gene expression data to be expressed in 721_B