

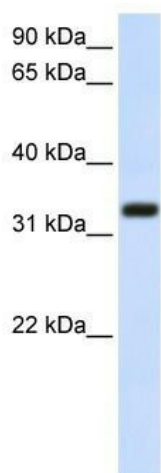
Product datasheet for **TA341997**

TMEM66 (SARAF) Rabbit Polyclonal Antibody

Product data:

Product Type:	Primary Antibodies
Applications:	WB
Recommended Dilution:	WB
Reactivity:	Human
Host:	Rabbit
Isotype:	IgG
Clonality:	Polyclonal
Immunogen:	The immunogen for anti-TMEM66 antibody: synthetic peptide directed towards the middle region of human TMEM66. Synthetic peptide located within the following region: TNSAGPPPPGFKSEFTGPQNTGHGATSGFGSAFTGQQGYENSGPGFWTGL
Formulation:	Liquid. Purified antibody supplied in 1x PBS buffer with 0.09% (w/v) sodium azide and 2% sucrose.
Concentration:	lot specific
Conjugation:	Unconjugated
Storage:	Store at -20°C as received.
Stability:	Stable for 12 months from date of receipt.
Predicted Protein Size:	37 kDa
Gene Name:	store-operated calcium entry associated regulatory factor
Database Link:	NP_057211 Entrez Gene 51669 Human Q96BY9
Background:	TMEM66 is a multi-pass membrane protein. It belongs to The TMEM66 family. The exact function of TMEM66 remains unknown.
Synonyms:	FOAP-7; HSPC035; TMEM66; XTP3
Note:	Immunogen Sequence Homology: Rat: 100%; Human: 100%; Mouse: 100%; Rabbit: 93%; Pig: 90%; Bovine: 90%; Guinea pig: 86%
Protein Families:	Transmembrane


[View online »](#)

Product images:


WB Suggested Anti-TMEM66 Antibody Titration:
0.2-1 ug/ml; ELISA Titer: 1: 62500; Positive
Control: Transfected 293T