

Product datasheet for **TA341995**

IER3IP1 Rabbit Polyclonal Antibody

Product data:

Product Type:	Primary Antibodies
Applications:	WB
Recommended Dilution:	WB
Reactivity:	Rat
Host:	Rabbit
Isotype:	IgG
Clonality:	Polyclonal
Immunogen:	The immunogen for Anti-Hdhd2 antibody is: synthetic peptide directed towards the N-terminal region of Rat Hdhd2. Synthetic peptide located within the following region: LMQAALLCVNAIAVLHEERFLKNIGWGTDQGIGGFGEPEGIKSQLLNLR
Formulation:	Liquid. Purified antibody supplied in 1x PBS buffer with 0.09% (w/v) sodium azide and 2% sucrose. <i>Note that this product is shipped as lyophilized powder to China customers.</i>
Concentration:	lot specific
Purification:	Affinity Purified
Conjugation:	Unconjugated
Storage:	Store at -20°C as received.
Stability:	Stable for 12 months from date of receipt.
Predicted Protein Size:	42 kDa
Gene Name:	immediate early response 3 interacting protein 1
Database Link:	NP_057181 Entrez Gene 500270 Rat Q9Y5U9
Background:	The function of This protein remains unknown.
Synonyms:	HSPC039; MEDS; PRO2309

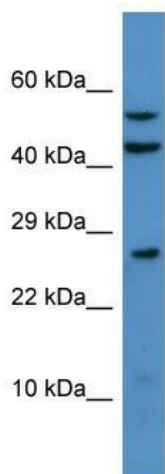


[View online »](#)

Note: Immunogen Sequence Homology: Dog: 100%; Pig: 100%; Rat: 100%; Horse: 100%; Human: 100%; Mouse: 100%; Bovine: 100%; Rabbit: 100%; Zebrafish: 100%; Guinea pig: 100%; Goat: 92%; Yeast: 83%

Protein Families: Transmembrane

Product images:



Host: Rabbit

Target Name: Hdhd2

Sample Tissue: Rat Liver Lysate

Antibody Dilution: 1.0µg/ml

Host: Rabbit; Target Name: Hdhd2; Sample Tissue: Rat Liver lysates; Antibody Dilution: 1.0 ug/ml