

Product datasheet for **TA341992**

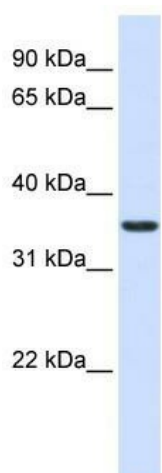
TMX2 Rabbit Polyclonal Antibody

Product data:

Product Type:	Primary Antibodies
Applications:	WB
Recommended Dilution:	WB
Reactivity:	Human
Host:	Rabbit
Isotype:	IgG
Clonality:	Polyclonal
Immunogen:	The immunogen for anti-TXNDC14 antibody: synthetic peptide directed towards the middle region of human TXNDC14. Synthetic peptide located within the following region: IRMGLLYITLCIVFLMTCKPPLYMGPEYIKYFNDKTIDEELERDKRVTWI
Formulation:	Liquid. Purified antibody supplied in 1x PBS buffer with 0.09% (w/v) sodium azide and 2% sucrose. <i>Note that this product is shipped as lyophilized powder to China customers.</i>
Concentration:	lot specific
Conjugation:	Unconjugated
Storage:	Store at -20°C as received.
Stability:	Stable for 12 months from date of receipt.
Predicted Protein Size:	34 kDa
Gene Name:	thioredoxin related transmembrane protein 2
Database Link:	NP_057043 Entrez Gene 51075 Human Q9Y320
Background:	The exact function of TXNDC14 remains unknown.
Synonyms:	CGI-31; PDIA12; PIG26; TXNDC14
Note:	Immunogen Sequence Homology: Dog: 100%; Pig: 100%; Rat: 100%; Horse: 100%; Human: 100%; Mouse: 100%; Bovine: 100%; Rabbit: 93%; Guinea pig: 93%; Zebrafish: 85%
Protein Families:	Druggable Genome, Transmembrane



[View online »](#)

Product images:

WB Suggested Anti-TXNDC14 Antibody Titration:
0.2-1 ug/ml; ELISA Titer: 1: 12500; Positive
Control: Human Liver