

Product datasheet for **TA341991**

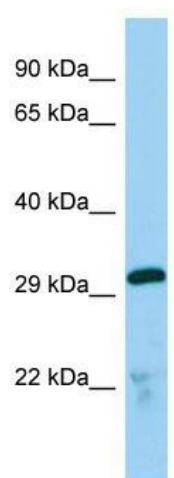
TMX2 Rabbit Polyclonal Antibody

Product data:

Product Type:	Primary Antibodies
Applications:	WB
Recommended Dilution:	WB
Reactivity:	Mouse
Host:	Rabbit
Isotype:	IgG
Clonality:	Polyclonal
Immunogen:	The immunogen for Anti-Tmx2 antibody is: synthetic peptide directed towards the C-terminal region of Mouse Tmx2. Synthetic peptide located within the following region: IRRPQIDKKGRAVSWTFSEENVIREFNLNELYQRAKKHSKGGDMSEEKPV
Formulation:	Liquid. Purified antibody supplied in 1x PBS buffer with 0.09% (w/v) sodium azide and 2% sucrose. <i>Note that this product is shipped as lyophilized powder to China customers.</i>
Concentration:	lot specific
Conjugation:	Unconjugated
Storage:	Store at -20°C as received.
Stability:	Stable for 12 months from date of receipt.
Predicted Protein Size:	34 kDa
Gene Name:	thioredoxin related transmembrane protein 2
Database Link:	NP_057043 Entrez Gene 66958 Mouse Q9Y320
Background:	The function of This protein remains unknown.
Synonyms:	CGI-31; PDIA12; PIG26; TXNDC14
Note:	Immunogen Sequence Homology: Dog: 100%; Pig: 100%; Rat: 100%; Human: 100%; Mouse: 100%; Bovine: 100%; Horse: 93%; Rabbit: 93%; Guinea pig: 93%; Zebrafish: 86%
Protein Families:	Druggable Genome, Transmembrane



[View online »](#)

Product images:

Host: Rabbit; Target Name: Tmx2; Sample Tissue: Mouse Lung lysates; Antibody Dilution: 1.0 ug/ml