

Product datasheet for **TA341989**

PIGT Rabbit Polyclonal Antibody

Product data:

Product Type:	Primary Antibodies
Applications:	WB
Recommended Dilution:	WB
Reactivity:	Human
Host:	Rabbit
Isotype:	IgG
Clonality:	Polyclonal
Immunogen:	The immunogen for anti-PIGT antibody: synthetic peptide directed towards the C terminal of human PIGT. Synthetic peptide located within the following region: LPANSVTKVSIQFERALLKWTEYTPDPNHGFYVSPSVLSALVPSMVAAKP
Formulation:	Liquid. Purified antibody supplied in 1x PBS buffer with 0.09% (w/v) sodium azide and 2% sucrose. <i>Note that this product is shipped as lyophilized powder to China customers.</i>
Concentration:	lot specific
Conjugation:	Unconjugated
Storage:	Store at -20°C as received.
Stability:	Stable for 12 months from date of receipt.
Predicted Protein Size:	64 kDa
Gene Name:	phosphatidylinositol glycan anchor biosynthesis class T
Database Link:	NP_057021 Entrez Gene 51604 Human Q969N2



[View online »](#)

Background: This gene encodes a protein that is involved in glycosylphosphatidylinositol (GPI)-anchor biosynthesis. The GPI-anchor is a glycolipid found on many blood cells and serves to anchor proteins to the cell surface. This protein is an essential component of the multisubunit enzyme, GPI transamidase. GPI transamidase mediates GPI anchoring in the endoplasmic reticulum, by catalyzing the transfer of fully assembled GPI units to proteins. Alternatively spliced transcript variants encoding multiple isoforms have been observed for this gene. [provided by RefSeq, May 2012]

Synonyms: CGI-06; MCAHS3; NDAP; PNH2

Note: Immunogen Sequence Homology: Dog: 100%; Pig: 100%; Rat: 100%; Horse: 100%; Human: 100%; Mouse: 100%; Bovine: 100%; Rabbit: 100%; Zebrafish: 100%; Guinea pig: 100%

Protein Families: Transmembrane

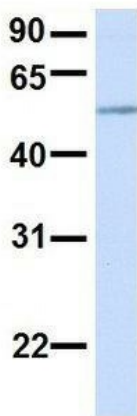
Protein Pathways: Glycosylphosphatidylinositol(GPI)-anchor biosynthesis, Metabolic pathways

Product images:



WB Suggested Anti-PIGT Antibody Titration: 0.2-1 ug/ml; ELISA Titer: 1: 62500; Positive Control: Transfected 293T

PIGT



Rabbit Anti-PIGT
 Sample Type: Human Adult Placenta
 Antibody Concentration: 1ug/mL

Host: Rabbit; Target Name: PIGT; Sample Tissue: Human Adult Placenta; Antibody Dilution: 1.0 ug/ml