

Product datasheet for **TA341988**

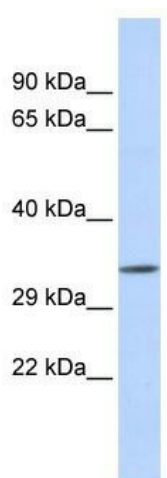
TEX264 Rabbit Polyclonal Antibody

Product data:

Product Type:	Primary Antibodies
Applications:	WB
Recommended Dilution:	WB
Reactivity:	Human
Host:	Rabbit
Isotype:	IgG
Clonality:	Polyclonal
Immunogen:	The immunogen for anti-TEX264 antibody: synthetic peptide directed towards the middle region of human TEX264. Synthetic peptide located within the following region: SIWLATRRVHPALDITYIKERKLCAYPRLEIQEDQIHFMCLARQGDFYV
Formulation:	Liquid. Purified antibody supplied in 1x PBS buffer with 0.09% (w/v) sodium azide and 2% sucrose. <i>Note that this product is shipped as lyophilized powder to China customers.</i>
Concentration:	lot specific
Conjugation:	Unconjugated
Storage:	Store at -20°C as received.
Stability:	Stable for 12 months from date of receipt.
Predicted Protein Size:	34 kDa
Gene Name:	testis expressed 264
Database Link:	NP_057010 Entrez Gene 51368 Human Q9Y6I9
Background:	The specific function of TEX264 is not yet known.
Synonyms:	ZSIG11
Note:	Immunogen Sequence Homology: Pig: 100%; Human: 100%; Mouse: 100%; Rabbit: 100%; Guinea pig: 100%; Dog: 93%; Rat: 93%; Horse: 93%; Bovine: 93%
Protein Families:	Secreted Protein, Transmembrane



[View online »](#)

Product images:

WB Suggested Anti-TEX264 Antibody Titration:
0.2-1 ug/ml; ELISA Titer: 1: 312500; Positive
Control: COLO205 cell lysate