

Product datasheet for **TA341985**

CHST15 Rabbit Polyclonal Antibody

Product data:

Product Type:	Primary Antibodies
Applications:	WB
Recommended Dilution:	WB
Reactivity:	Human
Host:	Rabbit
Isotype:	IgG
Clonality:	Polyclonal
Immunogen:	The immunogen for anti-GALNAC4S-6ST antibody: synthetic peptide directed towards the middle region of human GALNAC4S-6ST. Synthetic peptide located within the following region: YDNSTDGEPFFLTQDFIHAFQPNARLIVMLRDPVERLYSDYLYFASSNKS
Formulation:	Liquid. Purified antibody supplied in 1x PBS buffer with 0.09% (w/v) sodium azide and 2% sucrose. <i>Note that this product is shipped as lyophilized powder to China customers.</i>
Concentration:	lot specific
Conjugation:	Unconjugated
Storage:	Store at -20°C as received.
Stability:	Stable for 12 months from date of receipt.
Predicted Protein Size:	65 kDa
Gene Name:	carbohydrate (N-acetylgalactosamine 4-sulfate 6-O) sulfotransferase 15
Database Link:	NP_056976 Entrez Gene 51363 Human Q7LFX5



[View online »](#)

Background: Chondroitin sulfate (CS) is a glycosaminoglycan which is an important structural component of the extracellular matrix and which links to proteins to form proteoglycans. Chondroitin sulfate E (CS-E) is an isomer of chondroitin sulfate in which the C-4 and C-6 hydroxyl groups are sulfated. This gene encodes a type II transmembrane glycoprotein that acts as a sulfotransferase to transfer sulfate to the C-6 hydroxyl group of chondroitin sulfate. This gene has also been identified as being co-expressed with RAG1 in B-cells and as potentially acting as a B-cell surface signaling receptor. Alternative splicing results in multiple transcript variants encoding distinct isoforms. [provided by RefSeq, Jul 2012]

Synonyms: BRAG; GALNAC4S-6ST

Note: Immunogen Sequence Homology: Dog: 100%; Pig: 100%; Rat: 100%; Horse: 100%; Human: 100%; Mouse: 100%; Guinea pig: 100%; Bovine: 93%; Rabbit: 93%

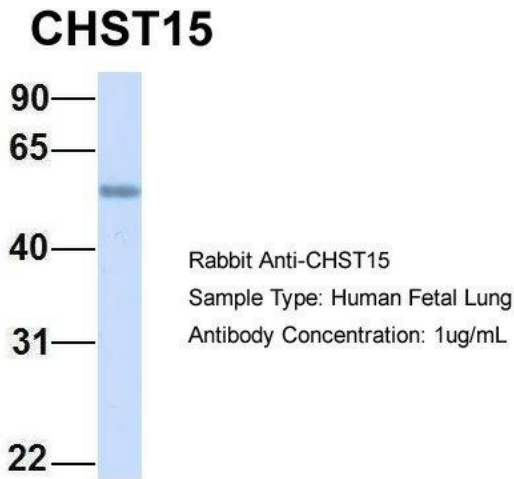
Protein Families: Transmembrane

Protein Pathways: Chondroitin sulfate biosynthesis

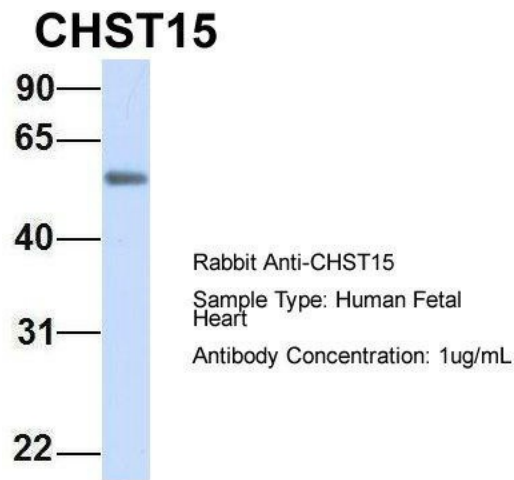
Product images:



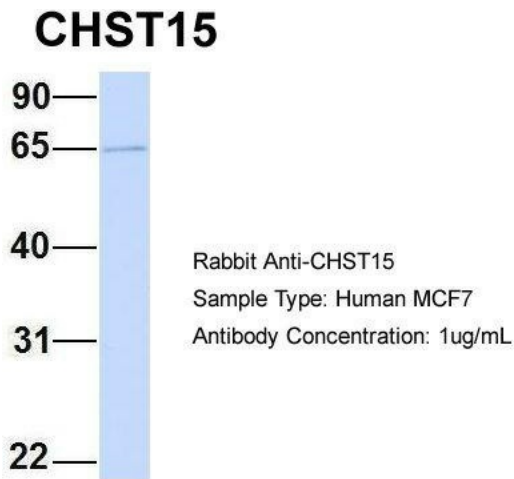
WB Suggested Anti-GALNAC4S-6ST Antibody
Titration: 0.2-1 ug/ml; ELISA Titer: 1: 12500;
Positive Control: Hela cell lysate



Host: Rabbit; Target Name: CHST15; Sample Tissue: Human Fetal Lung; Antibody Dilution: 1.0 ug/ml



Host: Rabbit; Target Name: CHST15; Sample Tissue: Human Fetal Heart; Antibody Dilution: 1.0 ug/ml



Host: Rabbit; Target Name: CHST15; Sample Tissue: MCF7; Antibody Dilution: 1.0 ug/ml. CHST15 is supported by BioGPS gene expression data to be expressed in MCF7